

Planning and Environmental Services Division
305 West Third Street • Oxnard, CA 93030 • (805) 385-7858 • Fax (805) 385-7417

May 4, 2006

Mr. Roy Ramirez
Superior Electrical Advertisings
1700 W Anaheim Street
Long Beach, CA 90813-1195

RE: *Minor Modification (PZ 05-140-44) to Special Use Permit PZ 99-5-8
Modifications to Approved Sign Program located at 501 & 511 South Rose Ave.*

The City of Oxnard has reviewed your request to modify the above-referenced permit. The requested minor modification includes changes to the approved sign program (PZ 04-140-5).

Existing Land Use: The site contains a gasoline station, oil/lube, car wash, mini-market with off-sale wine and beer, fast food restaurant with a drive thru and other ancillary commercial uses.

General Plan & Zoning Conformity: The City's 2020 General Plan designates the subject site General Commercial and the zoning designation for this site is General Commercial Planned Development. The proposed modifications to the sign program are consistent with the goals and policies of the General Plan and zoning requirements for this site.

Environmental Determination: In accordance with Section 15301(e) of the California Environmental Quality Act (CEQA) Guidelines, projects involving "minor alteration of existing... structures" may be found to be exempt from the requirements of CEQA. The project includes changing the dimensions and copy of approved signs. Therefore, staff has determined that there is no substantial evidence that the project may have a significant effect on the environment.

Background: On November 2, 1999 the City Council approved a General Plan Amendment from Central Industrial Area to General Commercial, a zone change from M-3 to C-2-PD and a special use permit for construction of a gasoline station and other related commercial uses (PZ 99-5-8). In October 2003, a minor modification (PZ 03-140-59) was approved to extend the service canopy to accommodate the installation of two additional gas pumps. As part of the original project, a sign program was approved for the subject site that allowed for a total of 419.25 square feet of sign area. On March 16, 2004 the Planning Manager approved a minor modification (PZ04-140-5) to change the configuration of the drive through lanes and amendments the sign program.

Analysis: Below is a summary of the changes to the sign program:

Sign Type	Allowed Required	Previously Submitted (PZ 04-140-5)	New Submittal
Wall Signs	300 square feet; 50sq/ft per sign	161.9 square feet	161.39 square feet.
Free Standing	300 sq.ft 24' tall	158.2 sq.ft. 20'6" tall	159 square feet.
Monument/Ground Signs	50 square feet 6 feet 2 allowed	50 square feet 6' tall 18 square feet 3'6" tall 8 square feet 3'6" tall (conditioned to be removed)	43.6 square feet 6' tall 18 square feet 3'6" tall
Directional Sign Exempt	3 square feet per side at each entrance	2.86 square feet- exempt	5.72 square feet exempt
Misc. drive thru-Exempt		95.83 square feet- exempt	99.2 square feet exempt
Drive thru non-exempt		18.5 square feet	18.5 square feet
Gas Price Signs	2 double sided signs, 5'x5' 80 square feet	2 double sided signs - exempt 50 square feet (12.5 per side)	2 double sided signs: 32 square feet exempt 10.69 square feet non exempt (2.65 per side)
Total Sign area	457 sq.ft	406.65 sq.ft	411.18 sq.ft.

CHANGES TO APPROVED SIGN TYPES

No.	Description	Change	Area square feet	Qty	Total
A	McDonald's	None	22.2	1	22.2
B	McDonald's	None	36	1	36
E	Do Not Enter	None	3	1	3 (Exempt)
F	Free Standing double sided	Removed "Lube" added Jiffy Lube	79.5 (per side)	1	159
G	Menu Boards	None	43.3	2	86.6 (Exempt)
I	Speakers	New design	6.86	2	13.7 (Exempt)
J	Clearance	None	18.5	1	18.5
K	Directional Monument double sided	None	2.86 (per side)	1	5.72 (Exempt)
L	Flag Pole	None	--	1	Exempt
M	Monument double sided	Replaced "Lube & oil" with "Jiffy Lube"	21.8 (per side)	1	43.6
N	Double sided gas price sign	Added logo	8 (per side exempt) 2.65 (per side non exempt)	2	32(Exempt) 10.69
O	Double sided Directional	None	9 (per side)	1	18
1	Circle K Logo	None	25	2	50
2	76 Logo	None	6.25	3	18.75
3	Express Car Wash	Decreased size	11.7	1	11.7
4	Lube	"Express Lube" to "Jiffy Lube"	22.74	1	22.74
Grand Total					411.18

The subject site is permitted by code to have 457 square feet of sign based on building lineal frontage; however, a condition of this approval limits the sign program to 420 square feet of sign area because that was the amount of sign area shown with the original approval of SUP 99-5-8 (419.25 square feet).

The freestanding sign area is determined by calculating the closest geometric shape around the sign within each panel. Each panel is allowed to have a specific square footage of sign area, as listed in the conditions below. In addition the background area of the freestanding sign area shall remain the color of the building and may not be used for advertising. Conditions of approval require that the total sign area of the freestanding sign will not exceed 159 square feet for the subject site, nor will the freestanding sign exceed 79.5 square feet per side.

The Planning and Environmental Services Division approves the requested minor modifications, based upon the following findings and conditions:

FINDINGS

1. As approved, the minor modification is consistent with the 2020 General Plan and zone designation on the property.
2. The minor modification is categorically exempt from the provisions of the California Environmental Quality Act (CEQA), under Section 15301.

CONDITIONS

1. Developer shall limit the total sign area for the subject site to 420 square feet.
2. Developer shall ensure the background areas of the freestanding sign remain the color of the building and are not used for advertising purposes. The sign area for the freestanding sign shall not exceed 79.5 square feet per side.
3. Developer shall ensure that the double-sided freestanding sign shall not exceed 20'6" in height, nor shall the sign area for said sign exceed a maximum total sign area of 159 square feet (79.5 per side), calculated by the following method:
 - a. Panel 1 is allowed a maximum of 19.5 sq.ft (Currently a 76 logo)
 - b. Panel 2 is allowed a maximum of 22 sq.ft (Currently a McDonalds logo)
 - c. Panel 3 is allowed a maximum of 8.5 sq.ft (Currently says Car Wash)
 - d. Panel 4 is allowed a maximum of 8.5sq.ft (Currently says Jiffy Lube)
 - e. Panel 5 is allowed a maximum of 21.0 sq.ft (Currently a Circle K logo)
4. Developer shall not install additional signs or make changes to the existing signs without an approved building permit, and a determination by the Planning Manager that such signs are consistent with the approved sign program.
5. Developer shall obtain a building permit for any new construction or modifications to structures, including interior modifications.
6. Prior to issuance of building permits, Developer shall correct all violations of the City Code existing on the project property.
7. Prior to issuance of building permits, Developer shall pay a document imaging fee for the Planning files in an amount calculated by Planning staff at the time of building permit review based on fees then in effect.

Mr. Roy Ramirez

May 4, 2006

Page 4

H. Except as modified by this request, all permit conditions of PZ 99-5-8 shall remain in full force and effect.

This letter serves as official approval of your minor modification request, and pertains only to those modifications described herein. You must apply for your building permits and other approvals, including signs separately. Approval of this minor modification will expire one year from the date of this letter. If you have any questions about this letter, please call Ashley Golden at (805) 385-7882.

Sincerely,

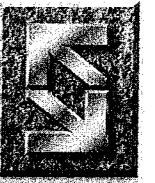


Susan L. Martin, AICP

Planning and Environmental Services Manager

cc: Ben Nikfarjam, Rose Plaza Development

Max sign Area for site - 4200



superior
electrical advertising

1700 West Anaheim Street
Long Beach, California
90813-1195
phone: 562.495.3808
facsimile: 562.435.1867

www.superiorsigns.com
design@superiorsigns.com

Project:
McDonald's

Address:
511 South Rose Ave.,
Oxnard, CA

Account Manager:
Stan Janocha

Designer:
L. Ramirez

Scale:
AS NOTED

Design No.:
02-07-3001

Date:
5/06

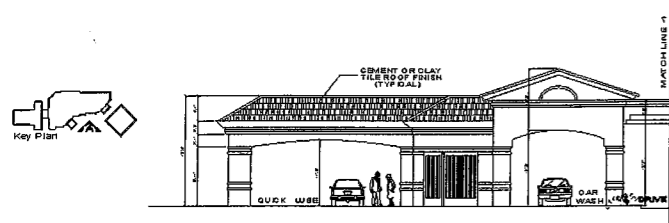
Reg. No.:

Revisions:
R8 12/10/04 LR Change the height of sign M
R9 1/25/04 LR Elim. reveals on sign M, N, O
R10 2/29/04 LR Elim. Change planter & add
city staff
R12 3/18/04 LR Replace express tube with
jiffy tube
R13 4/19/04 LR Move sign B
R15 6/17/04 LR Change mot signs on an
already completed store
R16 7/27/05 LR Changes to already
completed sign
R17 2/24/06 LR Change sq. footage on chart
(completed store)

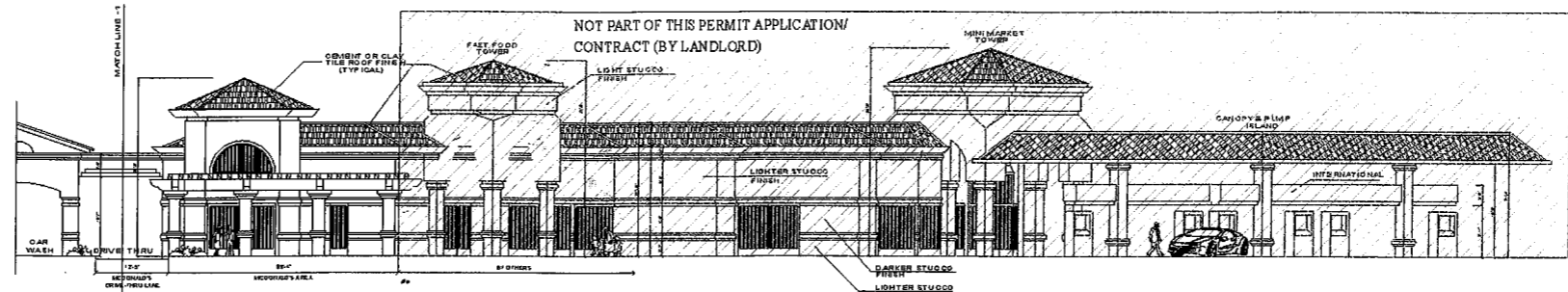
Page: Of
01 13

This is an original unpublished drawing
created by Superior Electrical Advertising.
It is submitted for your approval. It is not
to be shown to anyone outside of your
organization, nor is it to be reproduced,
copied or exhibited in any fashion. The
changing of colors, sizes, materials or
illumination method does not alter the
design. Ownership of this design is held
by Superior Electrical Advertising, Inc.
Authorization to use this design in any
fashion must be obtained in writing from
Superior Electrical Advertising, Inc.

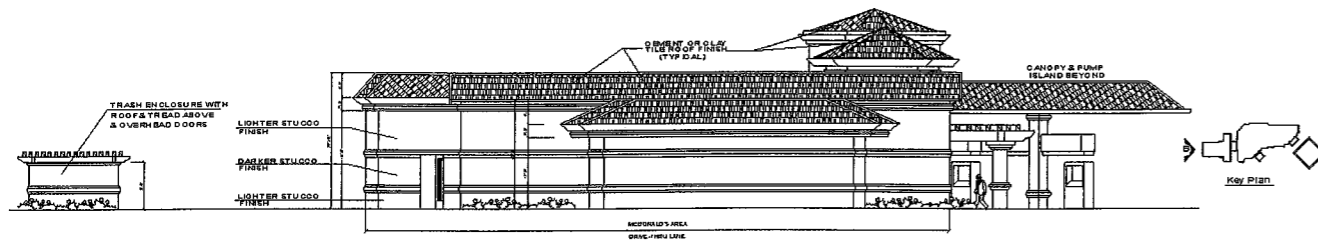
© SEA 2002
Note: The Colors depicted here are a
graphic representation. Actual colors
may vary. See color specifications.



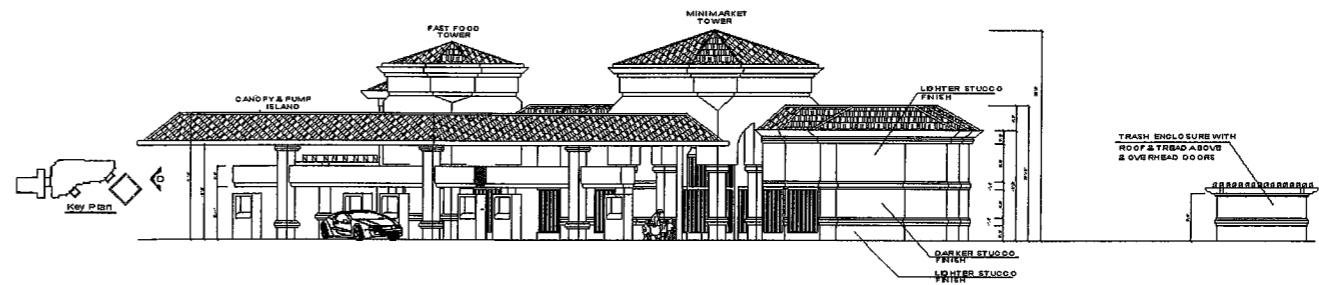
ELEVATION (A-2) (FOR REFERENCE ONLY)
Scale: 1/32" = 1'-0"



McDONALD'S ELEVATION (A-1)
Scale: 1/32" = 1'-0"



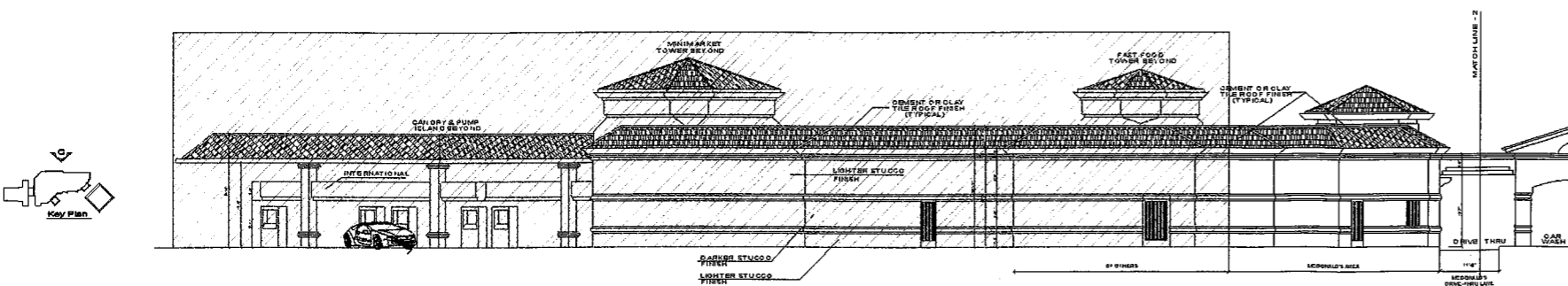
ELEVATION (B)
Scale: 1/32" = 1'-0"



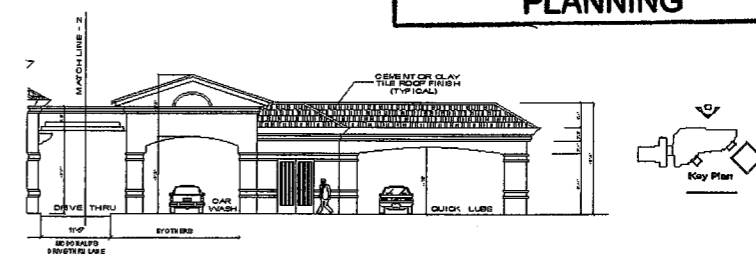
ELEVATION (D) (FOR REFERENCE ONLY)
Scale: 1/32" = 1'-0"

Replaced 04-140-5

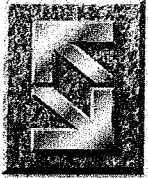
APPROVED
BY: PZ 05-140-44 to support 5-8
DATE: 5/17/06
CITY OF OXNARD
PLANNING



ELEVATION (C1)
Scale: 1/32" = 1'-0"



ELEVATION (C2)
Scale: 1/32" = 1'-0"



SUPERIOR
electrical advertising

1700 West Anaheim Street
Long Beach, California
90813-1195
phone: 562.495.3808
facsimile: 562.435.1867

www.superiorsigns.com
design@superiorsigns.com

Project:
McDonald's

Address:
**511 South Rose Ave.,
Oxnard, CA**

Account Manager:
Stan Janocha

Designer:
L. Ramirez

Scale:
AS NOTED

Design No.:
02-07-3001

Date:

Reg. No.:

Revisions:

- R8 4/21/04 LR Change the height of sign M
- R9 4/25/04 LR Elim. reveals on sign M, N, O
- R10 2/9/04 LR Elim. Change planter & add city staff
- R12 3/18/04 LR Replace express tube with jiffy tube
- R13 4/19/04 LR Move sign B
- R15 6/17/04 LR Change mcd signs on an already completed store
- R16 5/27/05 LR Changes to already completed sign
- R17 1/24/06 LR Change sq. footage on chart (completed store)

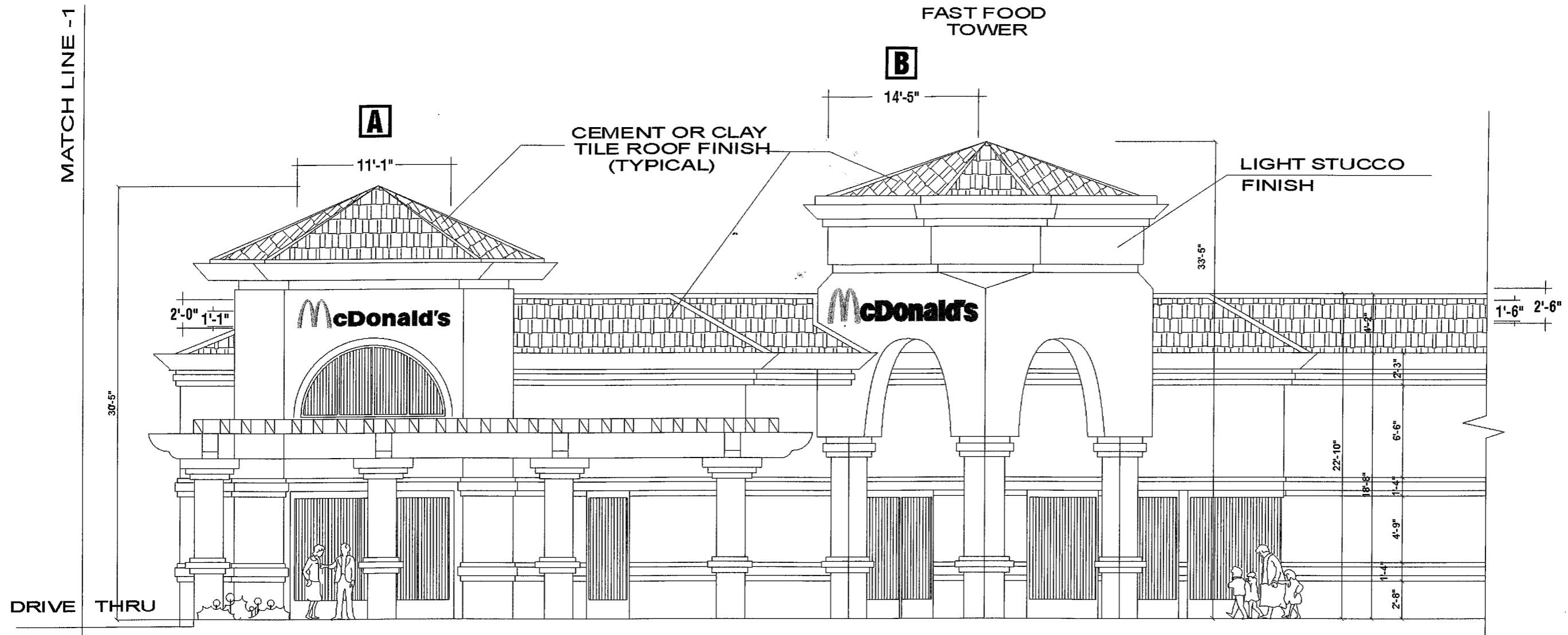
Page: **02** Of: **13**

This is an original unpublished drawing created by Superior Electrical Advertising. It is submitted for your approval. It is not to be shown to anyone outside of your organization, nor is it to be reproduced, copied or exhibited in any fashion. The changing of colors, sizes, materials or illumination method does not alter the design. Ownership of this design is held by Superior Electrical Advertising, Inc. Authorization to use this design in any fashion must be obtained in writing from Superior Electrical Advertising, Inc.

© SEA 2002

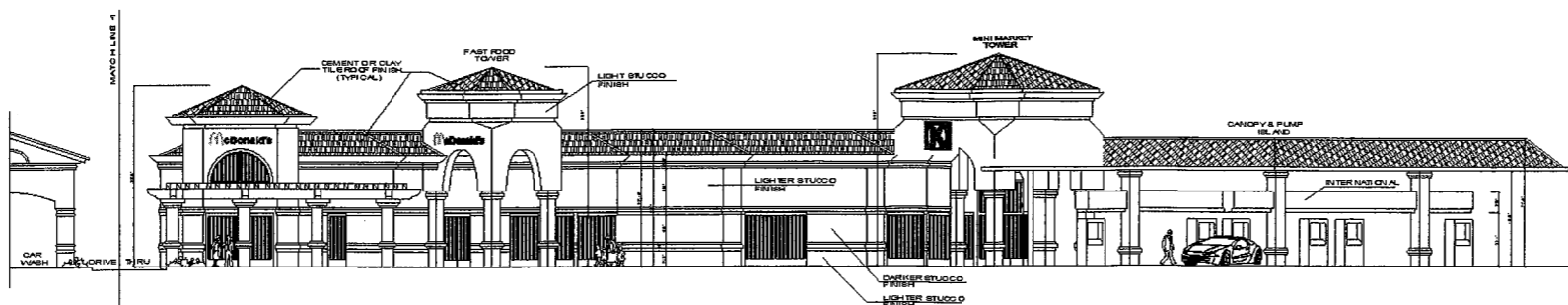
Note: The Colors depicted here are a graphic representation. Actual colors may vary. See color specifications.

MATCH LINE -1



McDONALD'S PARTIAL ELEVATION (A-1)

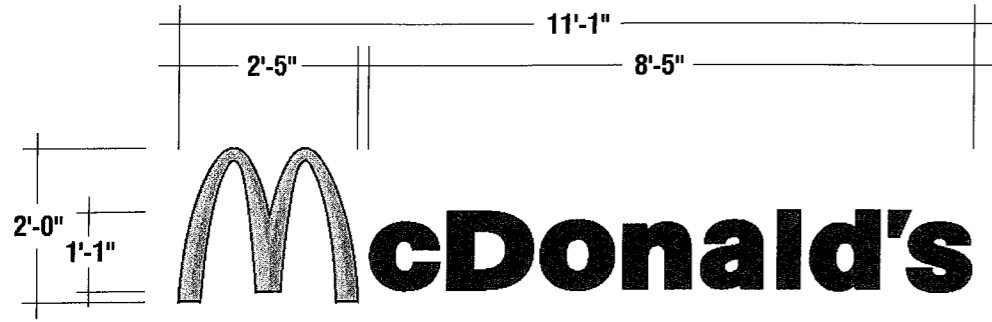
Scale: 1/8" = 1'-0"



McDONALD'S ELEVATION (A-1)

Scale: 1/32" = 1'-0"

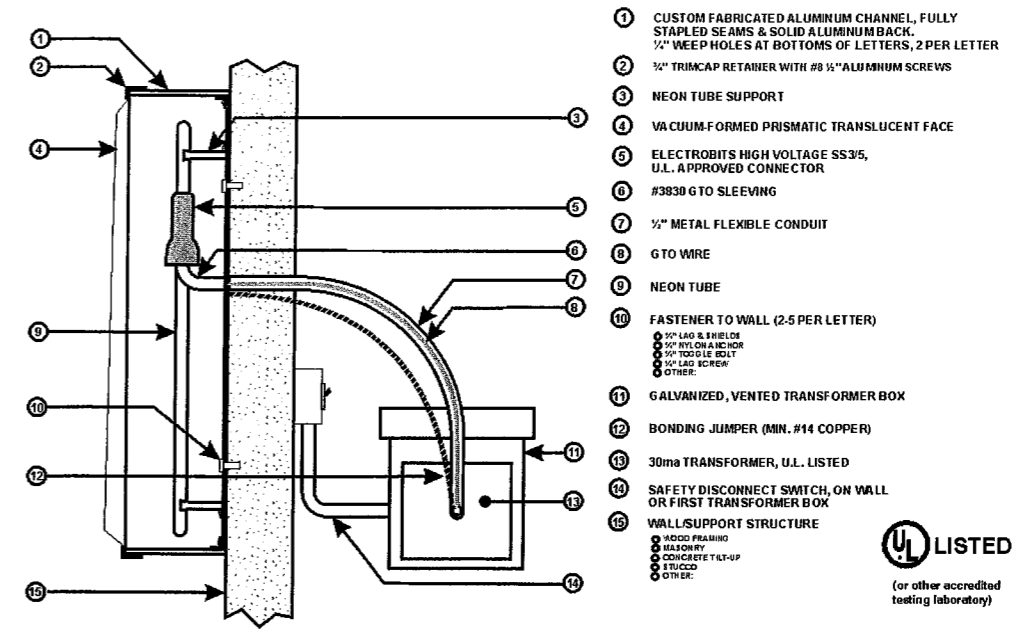
APPROVED
 BY: P205-140-44 to Su pag-5-8
 DATE: 5/17/06
**CITY OF OXNARD
 PLANNING**



A ILLUMINATED VACUUM-FORMED CHANNEL LETTERS AND ARCH 22.2
 Scale: 3/8" = 1'-0" Quantity: One (1) Required

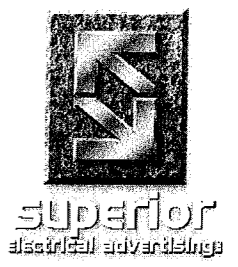
- SPECIFICATIONS:**
- LOGO & LETTERS ARE CUSTOM ALUMINUM PAN CHANNEL CONSTRUCTION WITH 5" DEEP RETURNS THAT ARE FINISHED IN THERMOSET ENAMEL OVER PRIMER UNDERCOAT.
 - FACES ARE VACUUM-FORMED TO CREATE PRISMATIC EFFECT.
 - COLORS: LETTER FACES - RED
 LETTER RETURNS - BRONZE
 LETTER TRIMCAP - 3/4" RED
 LOGO FACE - #2037 YELLOW
 LOGO RETURNS - McD'S YELLOW
 LOGO TRIMCAP - 3/4" GOLD

NOTE:
 INCREASE FROM 18"



CHANNEL LETTER SECTION DETAIL - ELECTROBITS

DETAIL = UL48-T1D N.T.S.



1700 West Anaheim Street
 Long Beach, California
 90813-1195
 phone: 562.495.3808
 facsimile: 562.435.1867
 www.superiorsigns.com
 design@superiorsigns.com

Project:
 McDonald's

Address:
 511 South Rose Ave.,
 Oxnard, CA

Account Manager:
 Stan Janocha

Designer:
 L. Ramirez

Scale:
 AS NOTED

Design No.:
 02-07-3001

Date:

Reg. No.:

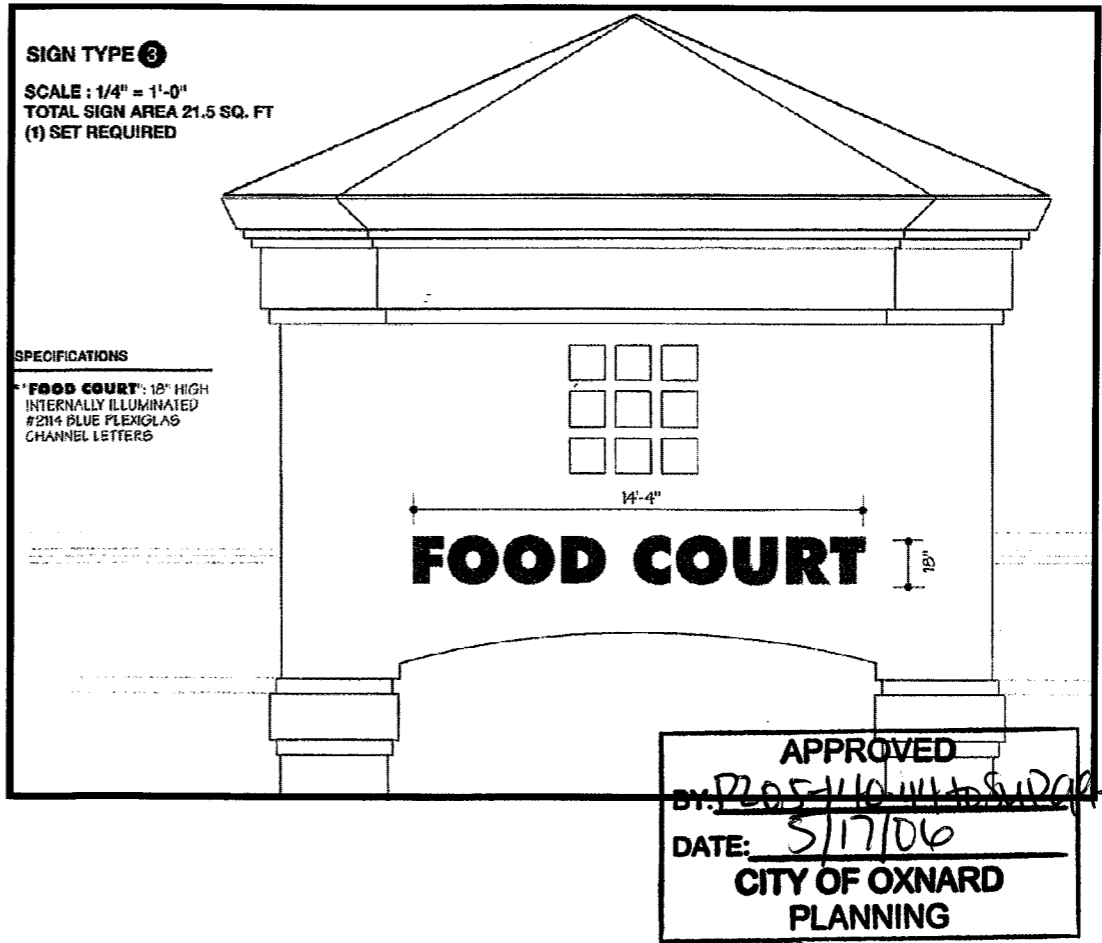
- Revisions:**
- R8 1/2/04 LR Change the height of sign M
 - R9 1/25/04 LR Elim. reveals on sign M, N, O
 - R10 2/28/04 LR Elim. Change planter & add city staff
 - R12 3/18/04 LR Replace express tube with jiffy tube
 - R13 4/19/04 LR Move sign B
 - R15 6/17/04 LR Change mct signs on an already completed store
 - R16 5/27/05 LR Change to already completed sign
 - R17 1/24/06 LR Change sq. footage on chart (completed store)

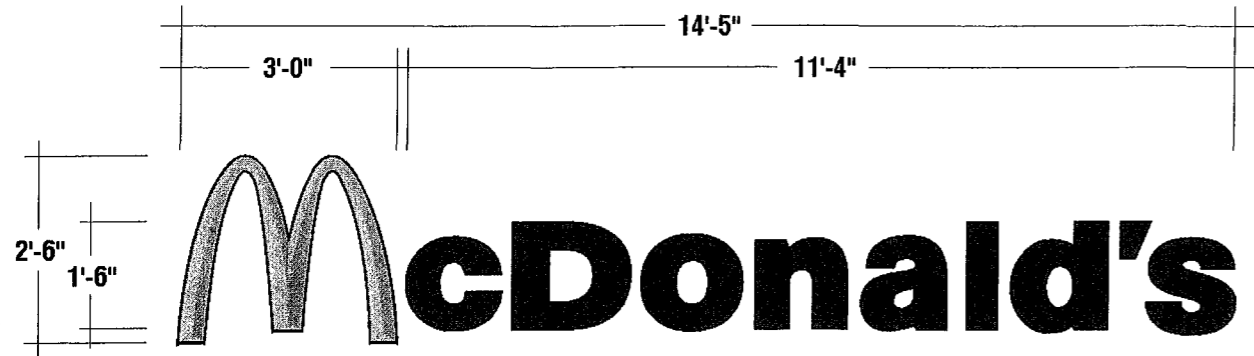
Page: 03 Of: 13

This is an original unpublished drawing created by Superior Electrical Advertising. It is submitted for your approval. It is not to be shown to anyone outside of your organization, nor is it to be reproduced, copied or exhibited in any fashion. The changing of colors, sizes, materials or illumination method does not alter the design. Ownership of this design is held by Superior Electrical Advertising, Inc. Authorization to use this design in any fashion must be obtained in writing from Superior Electrical Advertising, Inc.

© SEA 2002

Note: The Colors depicted here are a graphic representation. Actual colors may vary. See color specifications.



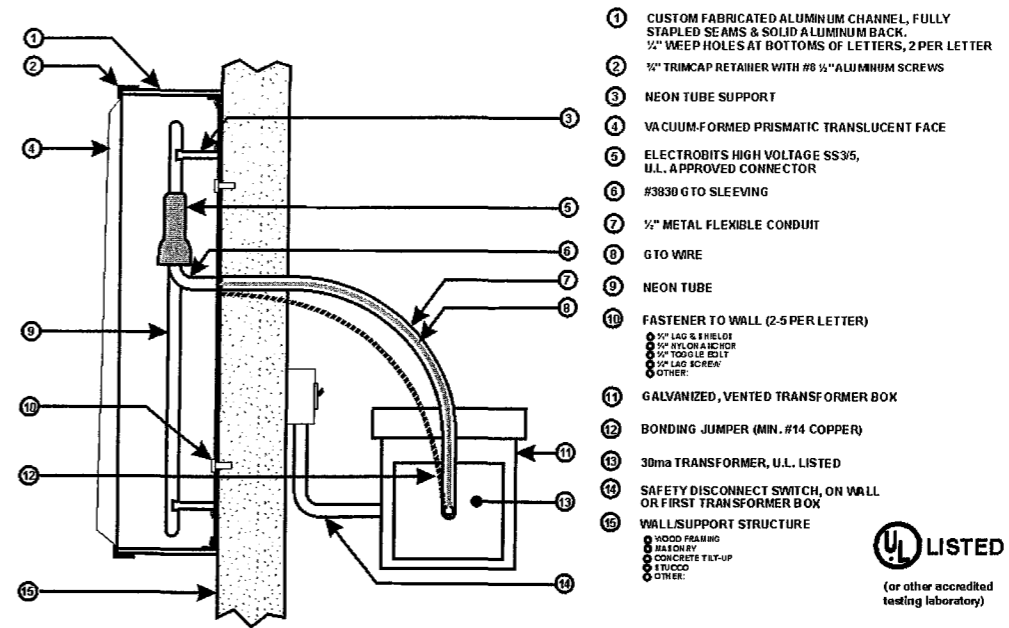


B ILLUMINATED VACUUM-FORMED CHANNEL LETTERS AND ARCH 36.0
 Scale: 3/8" = 1'-0" Quantity: One (1) Required

SPECIFICATIONS:

- LOGO & LETTERS ARE CUSTOM ALUMINUM PAN CHANNEL CONSTRUCTION WITH 5" DEEP RETURNS THAT ARE FINISHED IN THERMOSET ENAMEL OVER PRIMER UNDERCOAT.
- FACES ARE VACUUM-FORMED TO CREATE PRISMATIC EFFECT.
- COLORS: LETTER FACES - RED
 LETTER RETURNS - BRONZE
 LETTER TRIMCAP - 3/4" RED
 LOGO FACE - #2037 YELLOW
 LOGO RETURNS - McD'S YELLOW
 LOGO TRIMCAP - 3/4" GOLD

NOTE:
 INCREASE FROM 18"

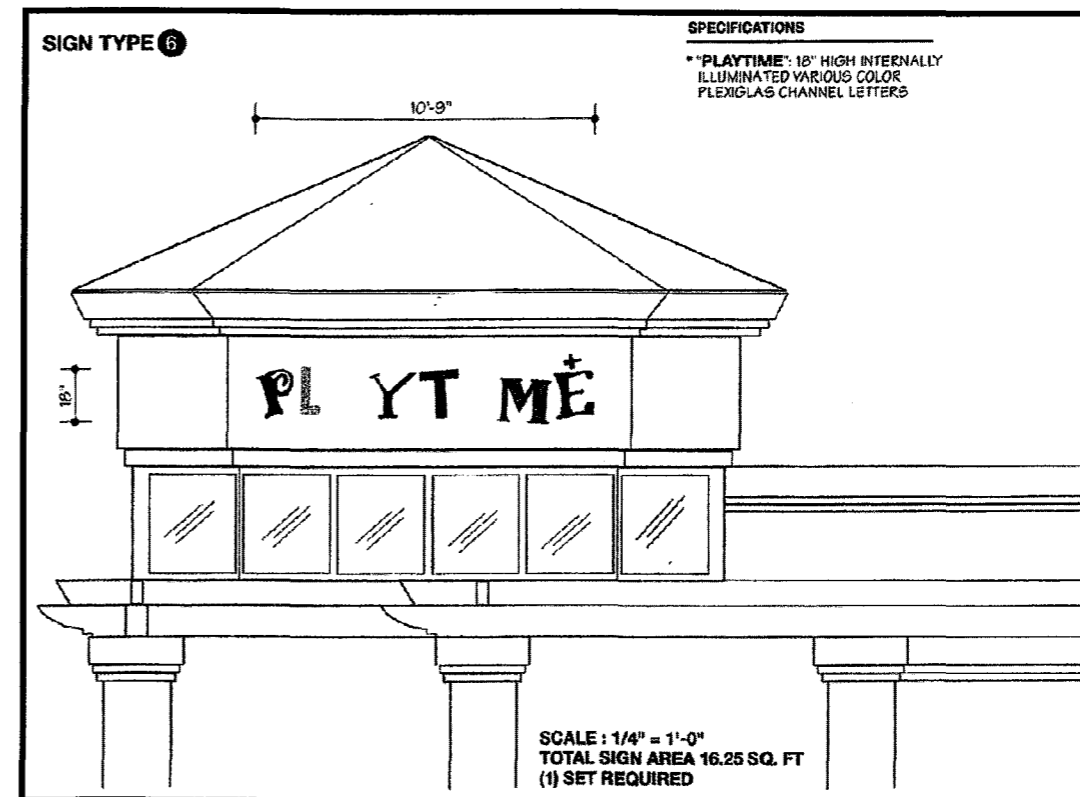


CHANNEL LETTER SECTION DETAIL - ELECTROBITS

DETAIL = UL48-T1D

APPROVED
 BY: *PZ05-140-44-TDUP99-5-8*
 DATE: *5/17/06*
**CITY OF OXNARD
 PLANNING**

N.T.S.



1700 West Anaheim Street
 Long Beach, California
 90813-1195
 phone: 562.495.3808
 facsimile: 562.435.1867

www.superiorsigns.com
 design@superiorsigns.com

Project:
 McDonald's

Address:
 511 South Rose Ave.,
 Oxnard, CA

Account Manager:
 Stan Janocha

Designer:
 L. Ramirez

Scale:
 AS NOTED

Design No.:
 02-07-3001

Date:

Reg. No.:

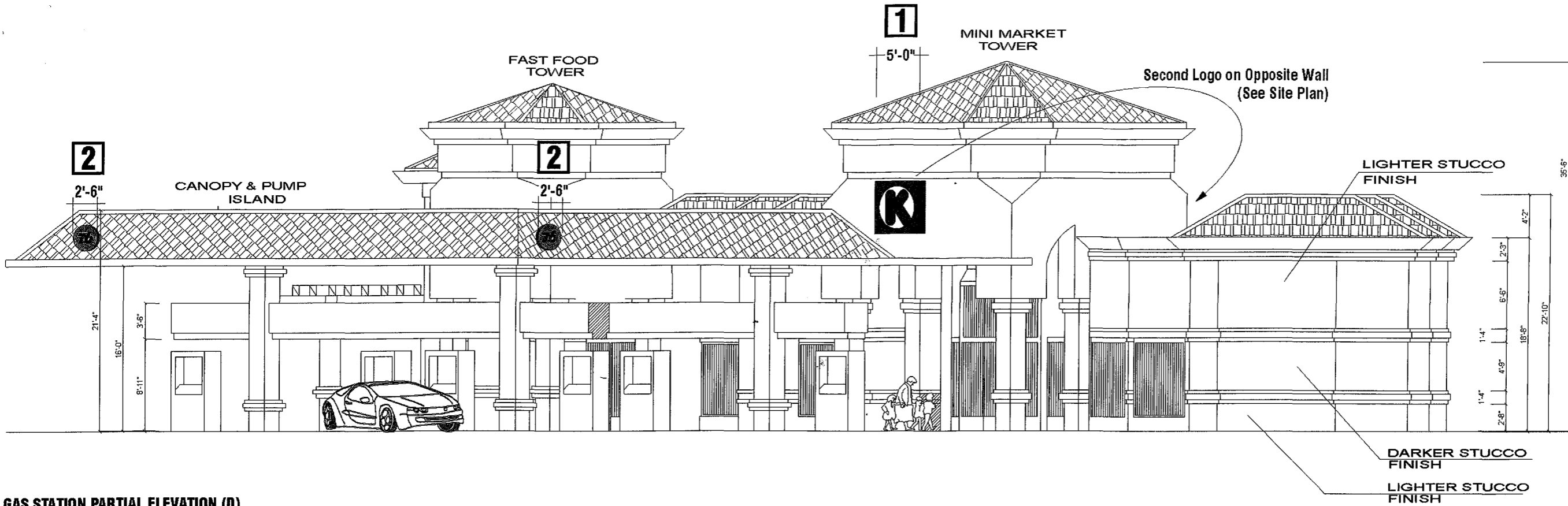
- Revisions:**
- R8 12/10/04 LR Change the height of sign M
 - R9 12/25/04 LR Elim. reveals on sign M, N, O
 - R10 2/20/04 LR Elim. Change planter & add city staff
 - R12 3/18/04 LR Replace express tube with jiffy tube
 - R13 4/19/04 LR Move sign B
 - R15 6/17/04 LR Change mod signs on an already completed store
 - R16 5/27/05 LR Changes to already completed sign
 - R17 12/4/06 LR Change sq. footage on chart (completed store)

Page: 04
 Of: 13

This is an original unpublished drawing created by Superior Electrical Advertising. It is submitted for your approval. It is not to be shown to anyone outside of your organization, nor is it to be reproduced, copied or exhibited in any fashion. The changing of colors, sizes, materials or illumination method does not alter the design. Ownership of this design is held by Superior Electrical Advertising, Inc. Authorization to use this design in any fashion must be obtained in writing from Superior Electrical Advertising, Inc.

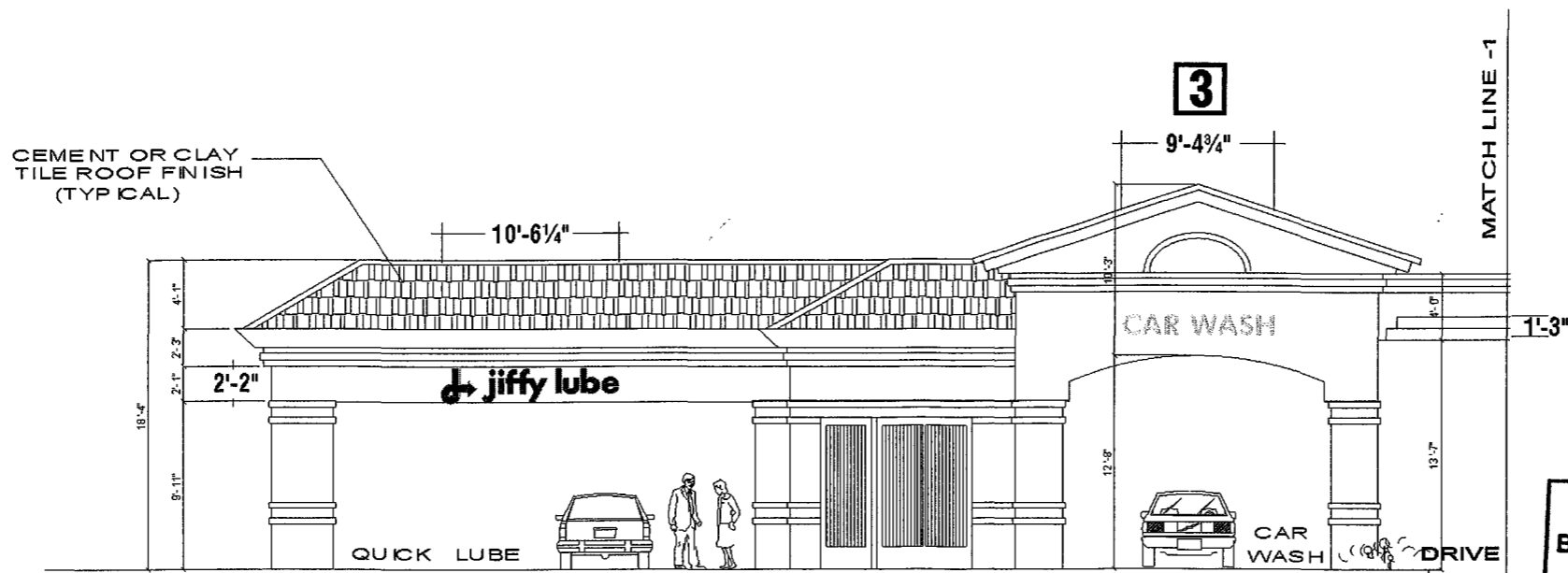
© SEA 2002

Note: The Colors depicted here are a graphic representation. Actual colors may vary. See color specifications.



GAS STATION PARTIAL ELEVATION (D)

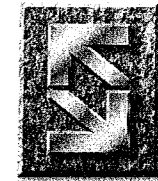
Scale: 3/32" = 1'-0"



ELEVATION (A-2)

Scale: 3/32" = 1'-0"

APPROVED
 BY: P205-140-44 to SUP 99-5-8
 DATE: 5/17/06
CITY OF OXNARD
PLANNING



superior
electrical advertising

1700 West Anaheim Street
 Long Beach, California
 90813-1195
 phone: 562.495.3808
 facsimile: 562.435.1867

www.superiorsigns.com
 design@superiorsigns.com

Project:
McDonald's

Address:
**511 South Rose Ave.,
 Oxnard, CA**

Account Manager:
Stan Janocha

Designer:
L. Ramirez

Scale:
AS NOTED

Design No.:
02-07-3001

Date:

Reg. No.:

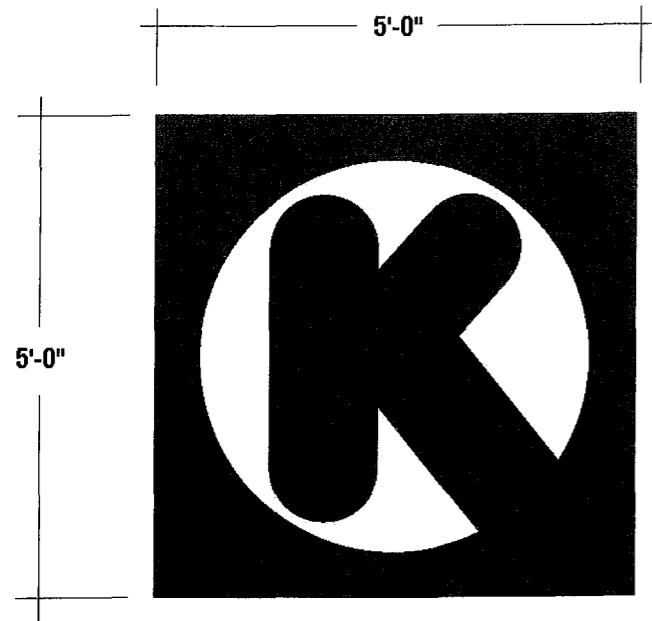
Revisions:
 R8 12/1/04 LR Change the height of sign M
 R9 12/25/04 LR Elim. reveals on sign M, N, O
 R10 2/09/04 LR Elim. Change planter & add city staff
 R12 3/18/04 LR Replace express tube with jiffy tube
 R13 4/19/04 LR Move sign B
 R15 6/17/04 LR Change mod signs on an already completed store
 R16 5/27/05 LR Changes to already completed sign
 R17 1/24/06 LR Change sq. footage on chart (completed store)

Page: 05 Of: 13

This is an original unpublished drawing created by Superior Electrical Advertising. It is submitted for your approval. It is not to be shown to anyone outside of your organization, nor is it to be reproduced, copied or exhibited in any fashion. The changing of colors, sizes, materials or illumination method does not alter the design. Ownership of this design is held by Superior Electrical Advertising, Inc. Authorization to use this design in any fashion must be obtained in writing from Superior Electrical Advertising, Inc.

© SEA 2002

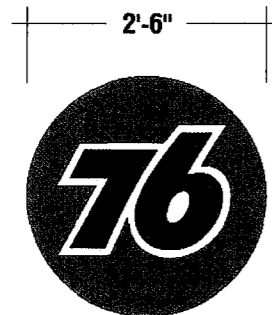
Note: The Colors depicted here are a graphic representation. Actual colors may vary. See color specifications.



1 ILLUMINATED SINGLE FACE WALL SIGN 50.0 ☐
 Scale: 1/2" = 1'-0" Quantity: Two (2) Required

SPECIFICATIONS:

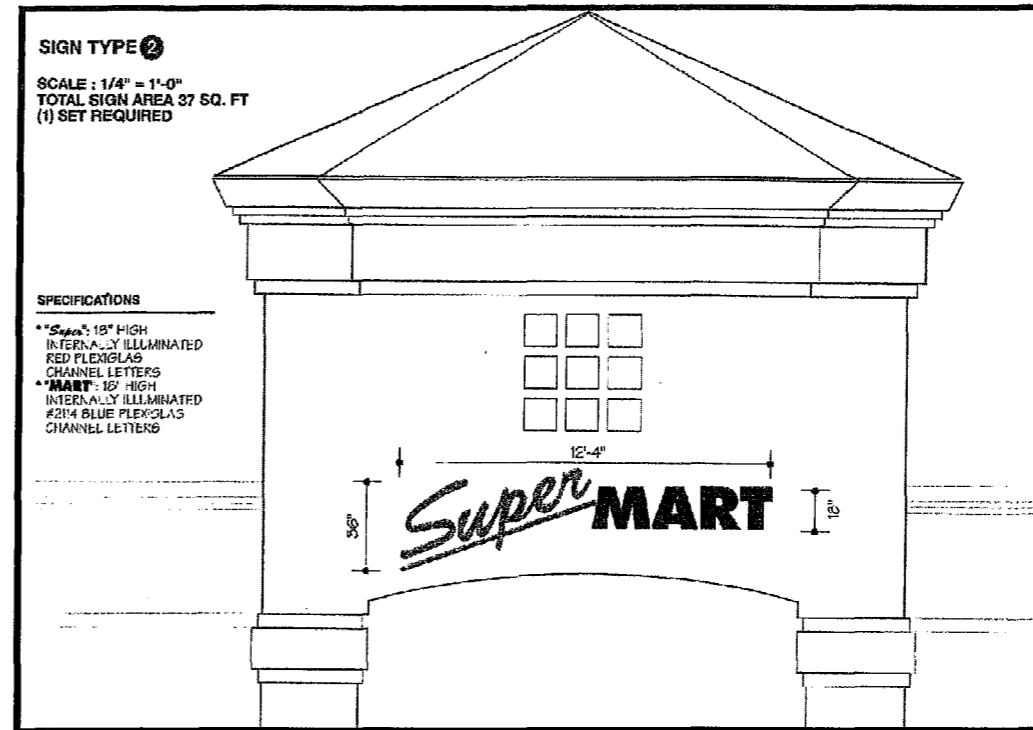
- ILLUMINATED SINGLE FACE CHANNEL LOGO WALL SIGN



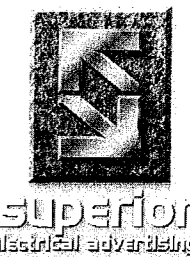
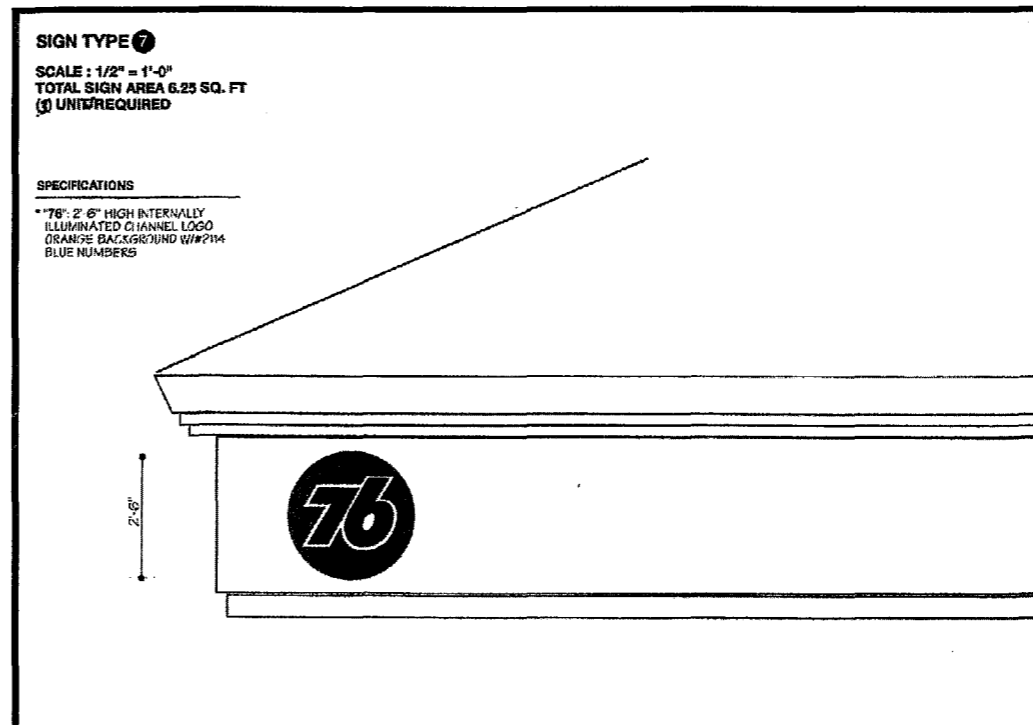
2 ILLUMINATED SINGLE FACE WALL SIGN 18.75 ☐
 Scale: 1/2" = 1'-0" Quantity: Three (3) Required

SPECIFICATIONS:

- ILLUMINATED SINGLE FACE CHANNEL LOGO WALL SIGN



APPROVED
 BY: PZ 05-140-44 to SUP 99-5-8
 DATE: 5/17/06
 CITY OF OXNARD
 PLANNING



Superior
 electrical advertising
 1700 West Anaheim Street
 Long Beach, California
 90813-1195
 phone: 562.495.3808
 facsimile: 562.435.1867

www.superiorsigns.com
 design@superiorsigns.com

Project:
 McDonald's

Address:
 511 South Rose Ave.,
 Oxnard, CA

Account Manager:
 Stan Janocha

Designer:
 L. Ramirez

Scale:
 AS NOTED

Design No.:
 02-07-3001

Date:

Reg. No.:

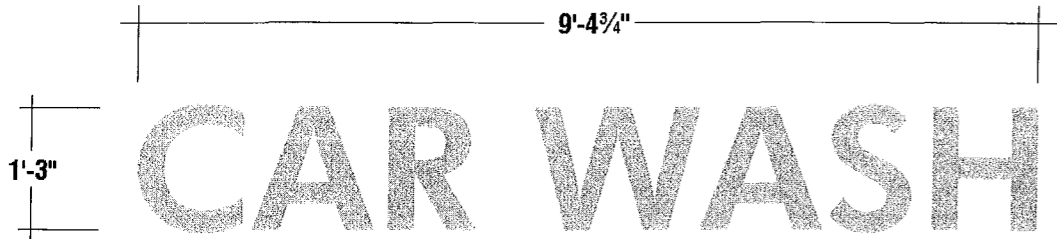
Revisions:
 R8 12/10/04 LR Change the height of sign M
 R9 12/20/04 LR Elim. reveals on sign M, N, O
 R10 2/20/05 LR Elim. Change planter & add city staff
 R12 3/18/04 LR Replace express tube with jiffy tube
 R13 4/19/04 LR Move sign B
 R15 6/17/04 LR Change mcd signs on an already completed store
 R16 5/27/05 LR Changes to already completed sign
 R17 1/24/06 LR Change sq. footage on chart (completed store)

Page: 06 Of: 13

This is an original unpublished drawing created by Superior Electrical Advertising. It is submitted for your approval. It is not to be shown to anyone outside of your organization, nor is it to be reproduced, copied or exhibited in any fashion. The changing of colors, sizes, materials or illumination method does not alter the design. Ownership of this design is held by Superior Electrical Advertising, Inc. Authorization to use this design in any fashion must be obtained in writing from Superior Electrical Advertising, Inc.

© SEA 2002

Note: The Colors depicted here are a graphic representation. Actual colors may vary. See color specifications.

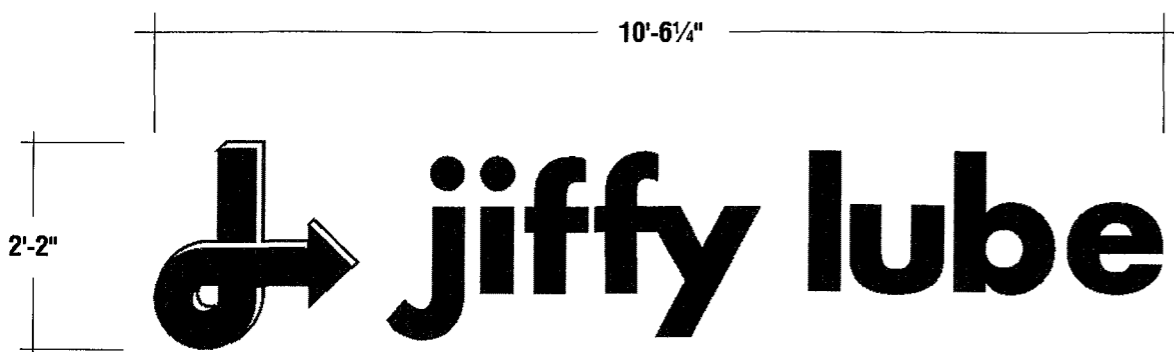


3 ILLUMINATED CHANNEL LETTERS
Scale: 1/2" = 1'-0"

NOW: 11.7
Quantity: One (1) Required

SPECIFICATIONS:

- REMOVE EXISTING "EXPRESS" ILLUMINATED CHANNEL LETTERS
- REPAIR AS NEEDED

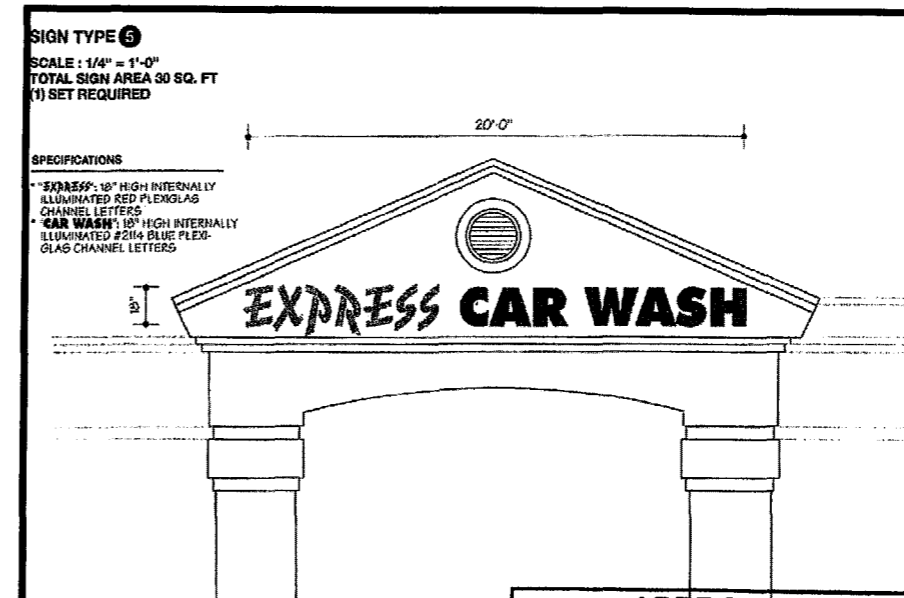


4 ILLUMINATED CHANNEL LOGO AND LETTERS
Scale: 1/2" = 1'-0"

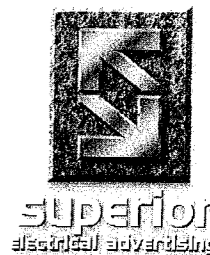
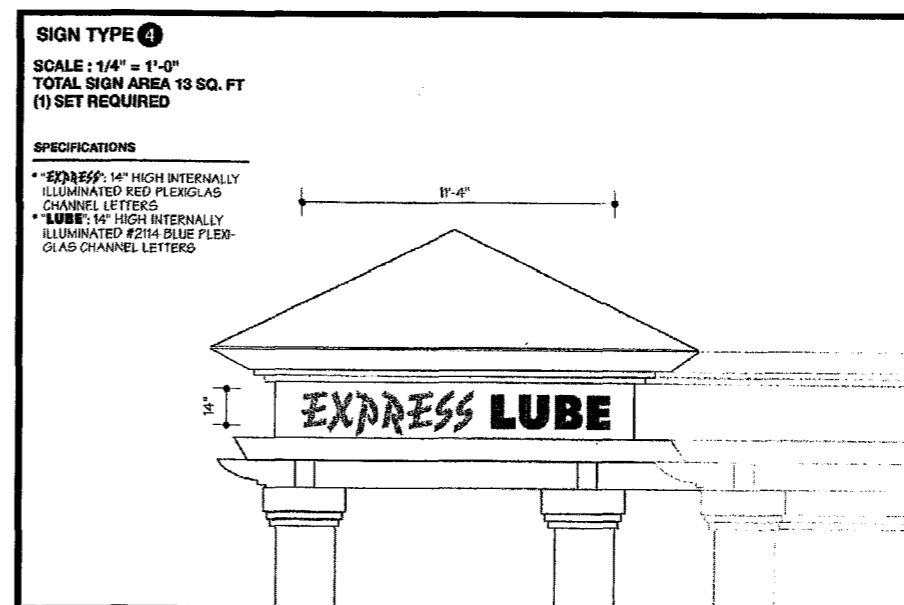
NOW: 22.74
Quantity: One (1) Required

SPECIFICATIONS:

- ILLUMINATED CHANNEL LOGO AND LETTERS
- INTERNAL ILLUMINATION TO BE U/L LISTED NEON
- LOGO AND LETTERS TO BE MANUFACTURED PER JIFFY LUBE SPECS



APPROVED
BY: P205-140-44 to SUP99-5-8
DATE: 5/17/06
CITY OF OXNARD
PLANNING



1700 West Anaheim Street
Long Beach, California
90813-1195
phone: 562.495.3808
facsimile: 562.435.1867

www.superiorsigns.com
design@superiorsigns.com

Project:
McDonald's

Address:
511 South Rose Ave.,
Oxnard, CA

Account Manager:
Stan Janocha

Designer:
L. Ramirez

Scale:
AS NOTED

Design No.:
02-07-3001

Date:

Reg. No.:

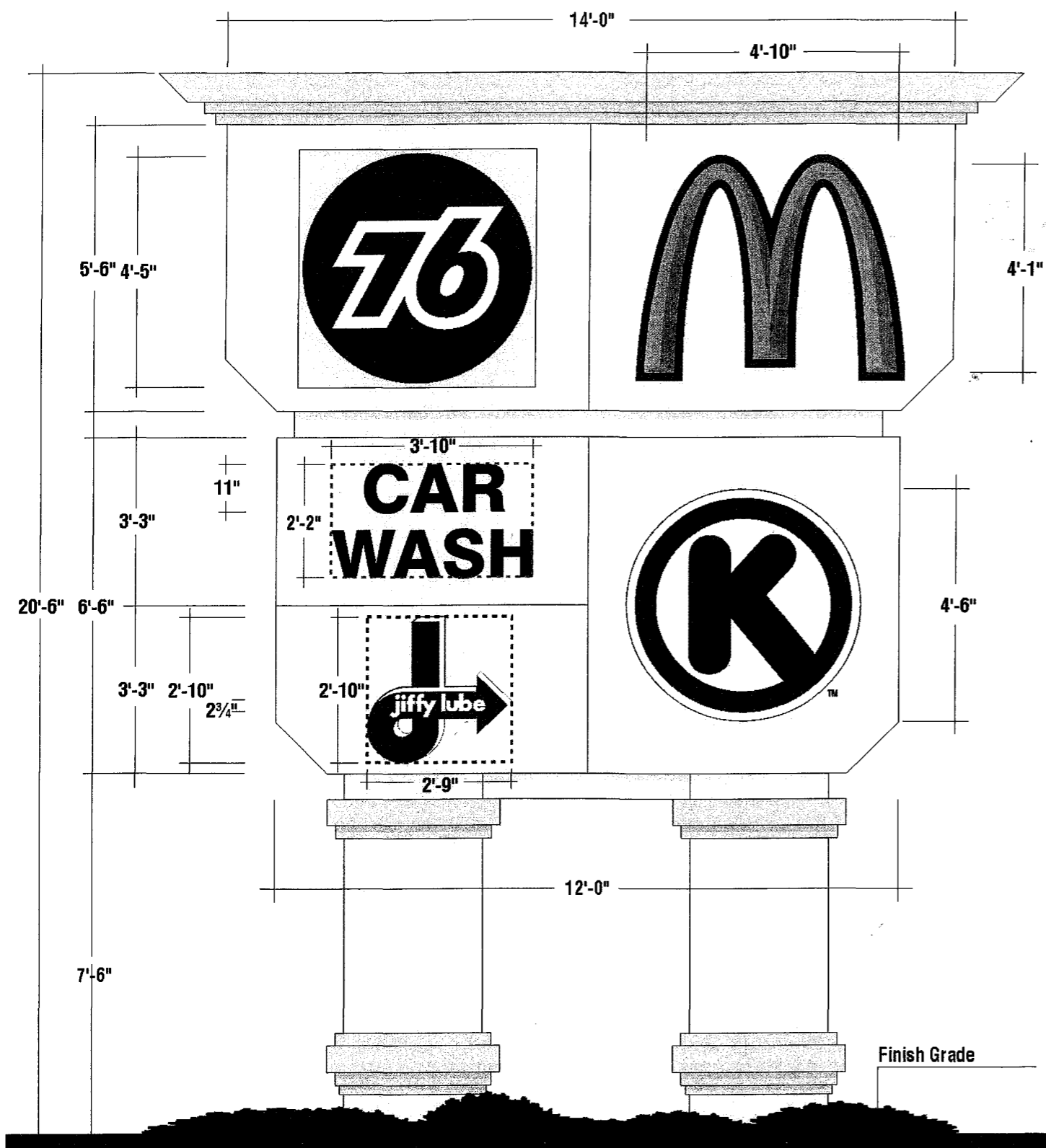
Revisions:
R8 12/10/04 LR Change the height of sign M
R9 1/25/04 LR Elim. reveals on sign M, N, O
R10 2/20/04 LR Elim. Change planter & add
city stuff
R12 3/18/04 LR Replace express lube with
jiffy lube
R13 4/19/04 LR Move sign B
R15 6/17/04 LR Change mod signs on an
already completed store
R16 5/27/05 LR Changes to already
completed sign
R17 12/4/05 LR Change sq. footage on chart
(completed store)

Page: 07
Of: 13

This is an original unpublished drawing created by Superior Electrical Advertising. It is submitted for your approval. It is not to be shown to anyone outside of your organization, nor is it to be reproduced, copied or exhibited in any fashion. The changing of colors, sizes, materials or illumination method does not alter the design. Ownership of this design is held by Superior Electrical Advertising, Inc. Authorization to use this design in any fashion must be obtained in writing from Superior Electrical Advertising, Inc.

© SEA 2002

Note: The Colors depicted here are a graphic representation. Actual colors may vary. See color specifications.



SIGN SCHEDULE - POLE SIGN				
NO.	DESCRIPTION	ILLUM.	AREA	PANEL
76	LOGO	Y	19.5	1
	ARCH LOGO	Y	22.0	2
	CAR WASH	Y	8.5	3
	JIFFY LUBE	Y	8.5	4
	CIRCLE K	Y	21.0	5
			79.5 PER SIDE	

* Background area to remain the color of the building



superior
electrical advertising

1700 West Anaheim Street
Long Beach, California
90813-1195
phone: 562.495.3808
facsimile: 562.435.1867

www.superiorsigns.com
design@superiorsigns.com

Project:
McDonald's

Address:
511 South Rose Ave.,
Oxnard, CA

Account Manager:
Stan Janocha

Designer:
L. Ramirez

Scale:
AS NOTED

Design No.:
02-07-3001

Date:

Reg. No.:

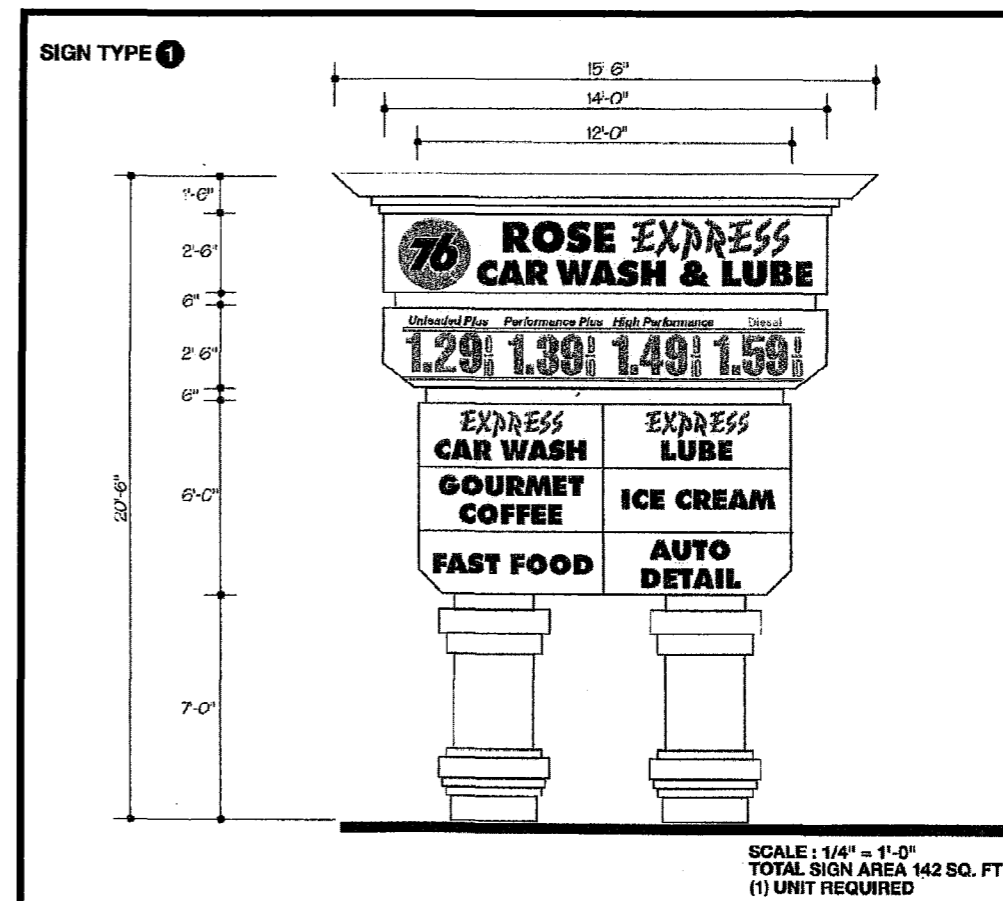
Revisions:
R8 12/04 LR Change the height of sign M
R9 12/04 LR Elim. reveals on sign M, N, O
R10 2/09/04 LR Elim. Change planter & add city stuff
R12 3/18/04 LR Replace express lube with jiffy lube
R13 4/19/04 LR Move sign B
R15 6/17/04 LR Change mod signs on an already completed store
R16 5/27/05 LR Changes to already completed sign
R17 12/4/06 LR Change sq. footage on chart (completed store)

Page: 08
Of: 13

This is an original unpublished drawing created by Superior Electrical Advertising. It is submitted for your approval. It is not to be shown to anyone outside of your organization, nor is it to be reproduced, copied or exhibited in any fashion. The changing of colors, sizes, materials or illumination method does not alter the design. Ownership of this design is held by Superior Electrical Advertising, Inc. Authorization to use this design in any fashion must be obtained in writing from Superior Electrical Advertising, Inc.

© SEA 2002

Note: The Colors depicted here are a graphic representation. Actual colors may vary. See color specifications

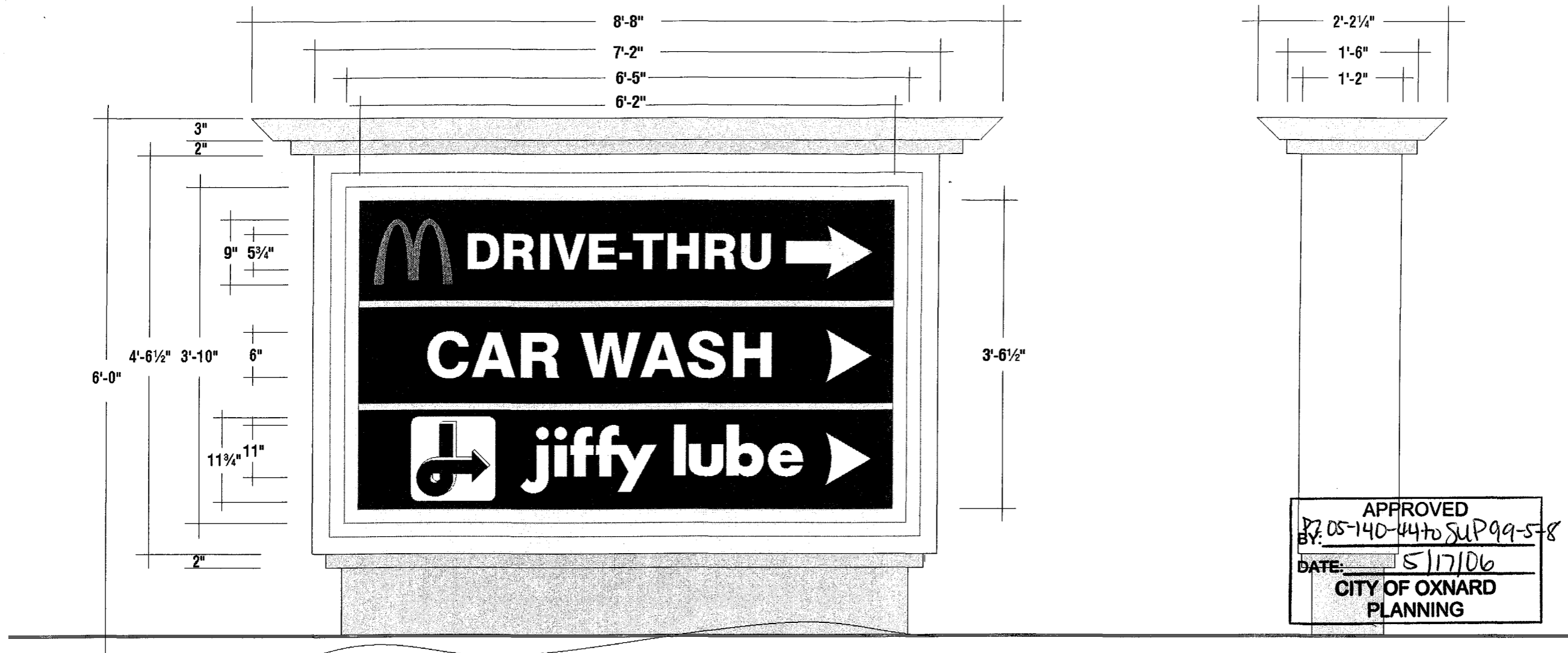


APPROVED
BY: PZ-05-140-44 to SUP99-5-8
DATE: 5/17/00
CITY OF OXNARD
PLANNING

F ILLUMINATED D/F POLE SIGN
Scale: 3/8" = 1'-0"

159.0 TOTAL
Quantity: Make One (1) Sign

BACKGROUND OF SIGN AREA TO REMAIN COLOR OF BUILDING AND NOT TO BE USED FOR SIGN DISPLAY



APPROVED
 BY: 05-140-44 to SUP 99-5-8
 DATE: 5/17/06
 CITY OF OXNARD
 PLANNING



1700 West Anaheim Street
 Long Beach, California
 90813-1195
 phone: 562.495.3808
 facsimile: 562.435.1867

www.superiorsigns.com
 design@superiorsigns.com

Project:
 McDonald's

Address:
 511 South Rose Ave.,
 Oxnard, CA

Account Manager:
 Stan Janocha

Designer:
 L. Ramirez

Scale:
 AS NOTED

Design No.:
 02-07-3001

Date:

Reg. No.:

Revisions:
 R8 12/1/04 LR Change the height of sign M
 R9 12/5/04 LR Elim. reveals on sign M, N, O
 R10 2/6/04 LR Elim. Change planter & add
 city staff
 R12 3/16/04 LR Replace express tube with
 jiffy tube
 R13 4/19/04 LR Move sign B
 R15 6/17/04 LR Change mat signs on an
 already completed store
 R16 5/27/05 LR Changes to already
 completed sign
 R17 12/4/05 LR Change sq. footage on chart
 (completed store)

Page: 09 Of: 13

This is an original unpublished drawing
 created by Superior Electrical Advertising.
 It is submitted for your approval. It is not
 to be shown to anyone outside of your
 organization, nor is it to be reproduced,
 copied or exhibited in any fashion. The
 changing of colors, sizes, materials or
 illumination method does not alter the
 design. Ownership of this design is held
 by Superior Electrical Advertising, Inc.
 Authorization to use this design in any
 fashion must be obtained in writing from
 Superior Electrical Advertising, Inc.

© SEA 2002
 Note: The Colors depicted here are a
 graphic representation. Actual colors
 may vary. See color specifications.

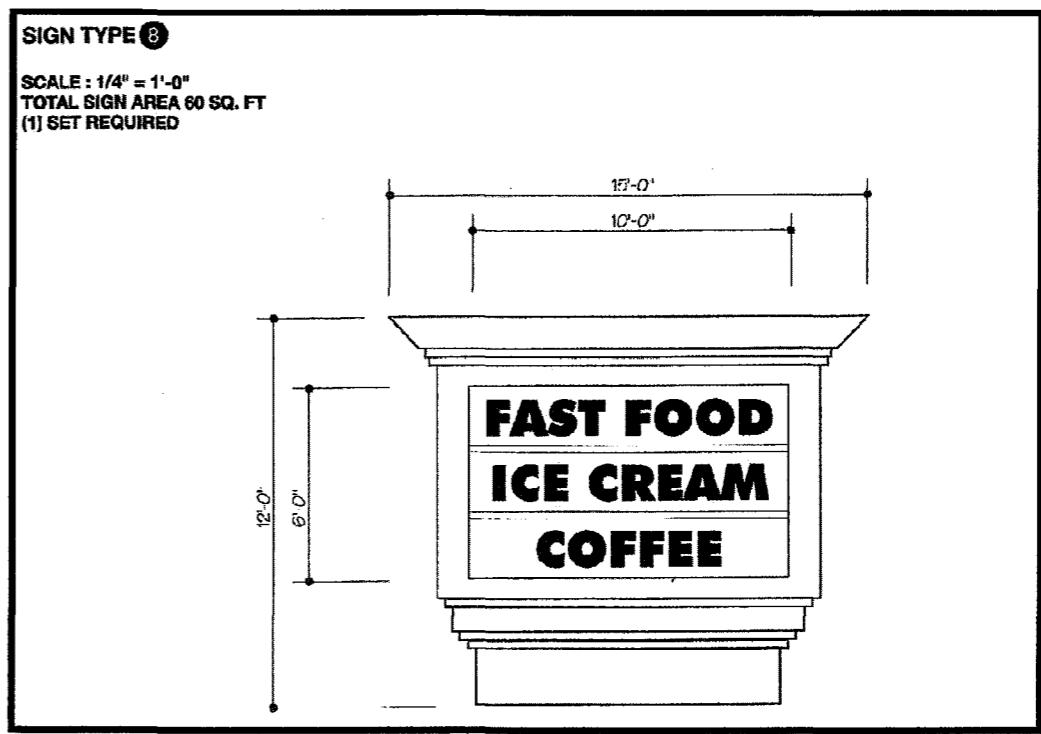
M NEW VINYL FOR EXISTING DOUBLE FACE ILLUMINATED MONUMENT SIGN
 Scale: 3/4" = 1'-0"

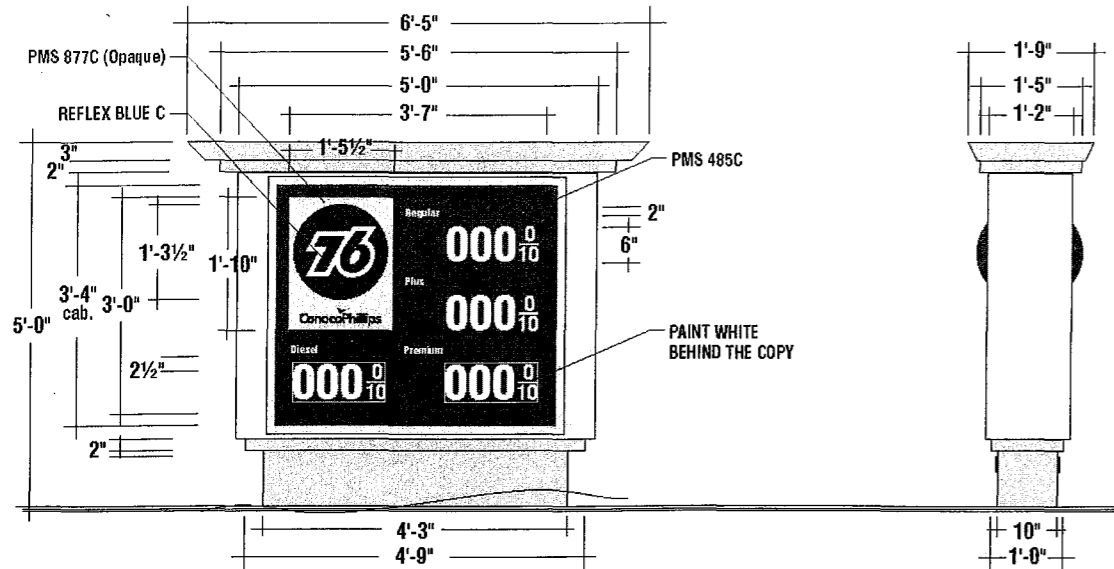
3'-6 1/2" x 6'-2" = 21.8 43.6
 Quantity: Make One (1) Sign

SPECIFICATIONS:

- REMOVE "McDONALD'S" VINYL COPY
 APPLY NEW VINYL
- COLORS: McDONALD'S FACE - #3630-53 RED VINYL OVERLAY
 ARCH - #3630-15 YELLOW VINYL OVERLAY
 "DRIVE-THRU" AND ARROW - WHITE

NOTE:
 MOVE NORTH





N DOUBLE FACE ILLUMINATED PRICE SIGN - EXEMPT 2.65 PER SIDE 5.3
 Scale: 3/8" = 1'-0" Quantity: Make Two (2) Signs

SPECIFICATIONS:

- MANUFACTURE FACES FOR DOUBLE FACE ILLUMINATED MONUMENT ALREADY MANUFACTURED
- FACE IS FLAT CLEAR PLEX WITH VACUUM-FORMED 76 LOGO
- FACE TO BE BACKSPRAYED
- FACE TO HAVE FAST AD TRACK FOR 6" CHANGEABLE COPY
- FAST TRACK TO HAVE SOME TYPE OF STOPPER AT THE END OF THE TRACK, SO THE COPY STAYS IN PLACE
- FACE TO BE PAINTED WHITE BEHIND THE CHANGEABLE COPY

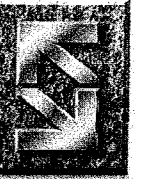
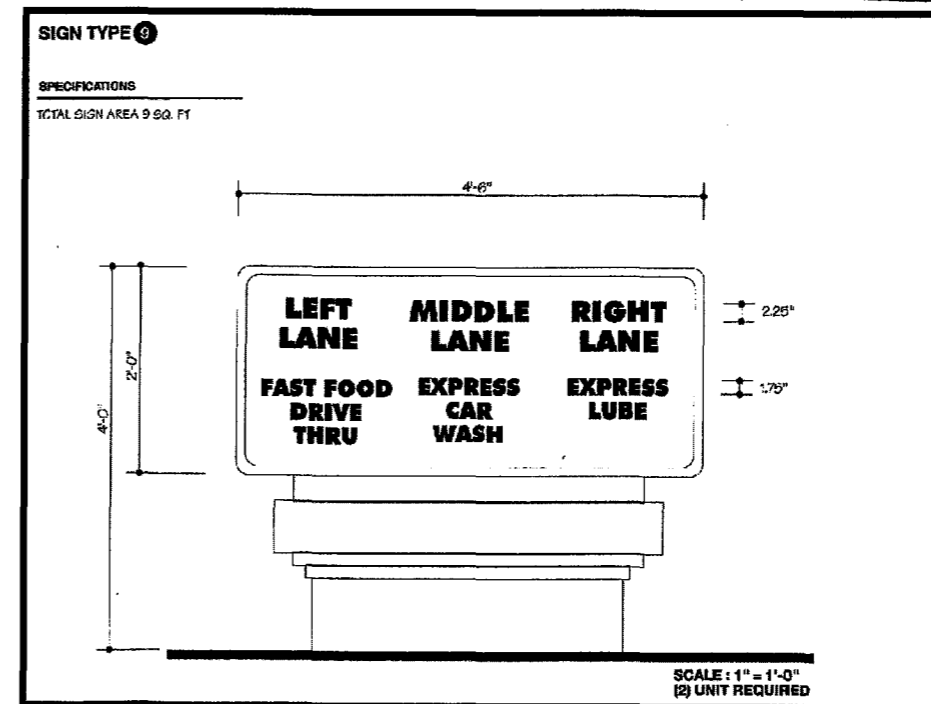


O DOUBLE FACE ILLUMINATED DIRECTIONAL SIGN 18.0
 Scale: 3/8" = 1'-0" Quantity: Make One (1) Sign

SPECIFICATIONS:

- REMOVE "McDONALD'S" VINYL COPY
- APPLY NEW VINYL
- COLORS: McDONALD'S FACE - #3630-53 RED VINYL OVERLAY
- ARCH - #3630-15 YELLOW VINYL OVERLAY
- "DRIVE-THRU" AND ARROW - WHITE

APPROVED
 BY: PZ-05-140-44 to SUP 99-5-8
 DATE: 5/17/00
 CITY OF OXNARD
 PLANNING



Superior
 Electrical Advertising

1700 West Anaheim Street
 Long Beach, California
 90813-1195
 phone: 562.495.3808
 facsimile: 562.435.1867

www.superiorsigns.com
 design@superiorsigns.com

Project:
 McDonald's

Address:
 511 South Rose Ave.,
 Oxnard, CA

Account Manager:
 Stan Janocha

Designer:
 L. Ramirez

Scale:
 AS NOTED

Design No.:
 02-07-3001

Date:

Reg. No.:

Revisions:
 R8 12/10/04 LR Change the height of sign M
 R9 12/20/04 LR Elim. reveals on sign M, N, O
 R10 2/20/04 LR Elim. Change planter & add city stuff
 R12 3/18/04 LR Replace express lube with jiffy lube
 R13 4/19/04 LR Move sign B
 R15 6/17/04 LR Change med signs on an already completed store
 R16 5/27/05 LR Changes to already completed sign
 R17 1/24/06 LR Change sq. footage on chart (completed store)

Page: 10 Of: 13

This is an original unpublished drawing created by Superior Electrical Advertising. It is submitted for your approval. It is not to be shown to anyone outside of your organization, nor is it to be reproduced, copied or exhibited in any fashion. The changing of colors, sizes, materials or illumination method does not alter the design. Ownership of this design is held by Superior Electrical Advertising, Inc. Authorization to use this design in any fashion must be obtained in writing from Superior Electrical Advertising, Inc.

© SEA 2002

Note: The Colors depicted here are a graphic representation. Actual colors may vary. See color specifications.

NOTE:
SIGN E, G, I, & L ARE EXEMPT

**** ALL FOOTINGS BY THE GENERAL CONTRACTOR ****
(for signs on this page)



superior
electrical advertising

1700 West Anaheim Street
Long Beach, California
90813-1195
phone: 562.495.3808
facsimile: 562.435.1867

www.superiorsigns.com
design@superiorsigns.com

Project:
McDonald's

Address:
**511 South Rose Ave.,
Oxnard, CA**

Account Manager:
Stan Janocha

Designer:
L. Ramirez

Design No.:
02-07-3001

Date:

Reg. No.:

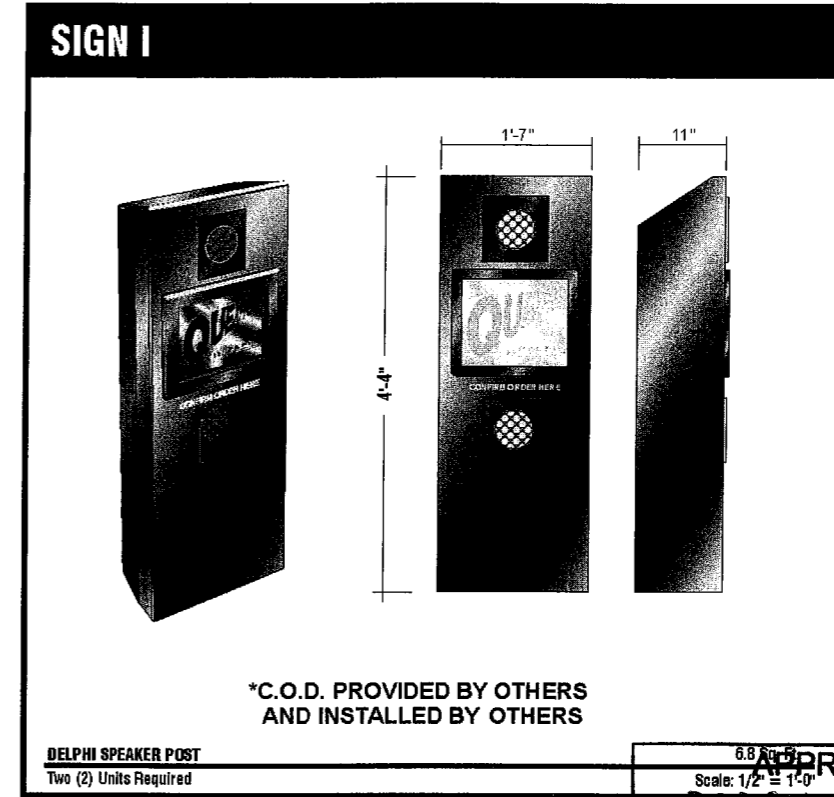
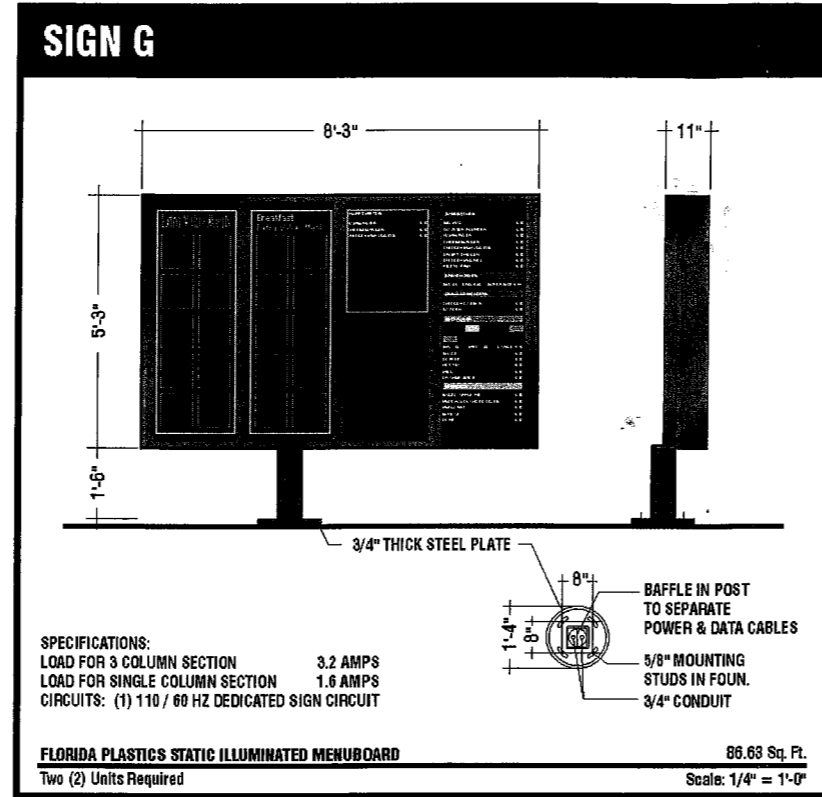
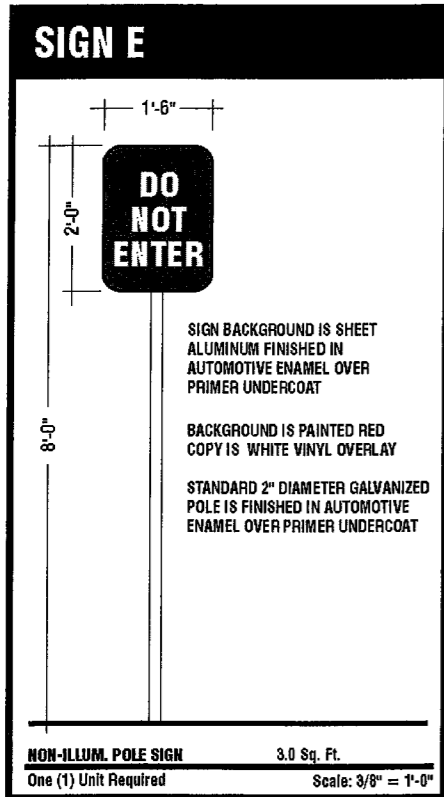
Revisions:
R8 1/21/04 LR Change the height of sign M
R9 1/25/04 LR Elim. reveals on sign M, N, O
R10 2/8/04 LR Elim. Change planter & add
city sign
R12 1/18/04 LR Replace express tube with
jiffy tube
R13 4/19/04 LR Move sign B
R15 6/17/04 LR Change most signs on an
already completed store
R16 5/27/05 LR Changes to already
completed sign
R17 4/24/06 LR change sq. footage on chart
(completed store)

Page: **11** Of: **13**

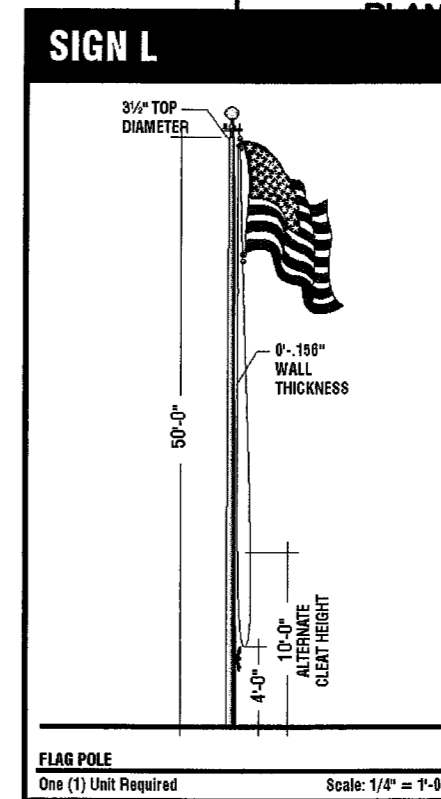
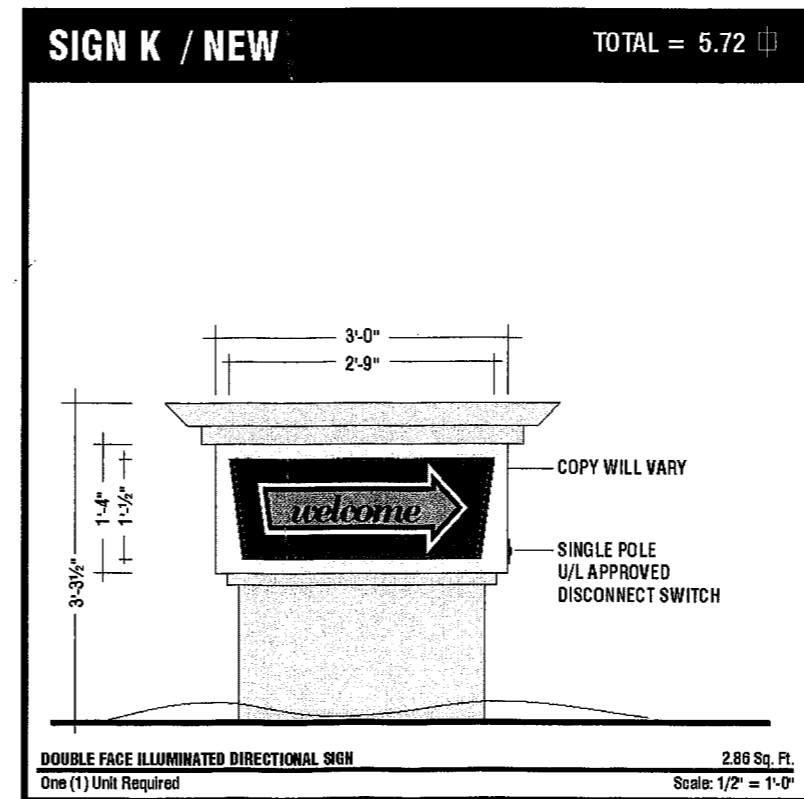
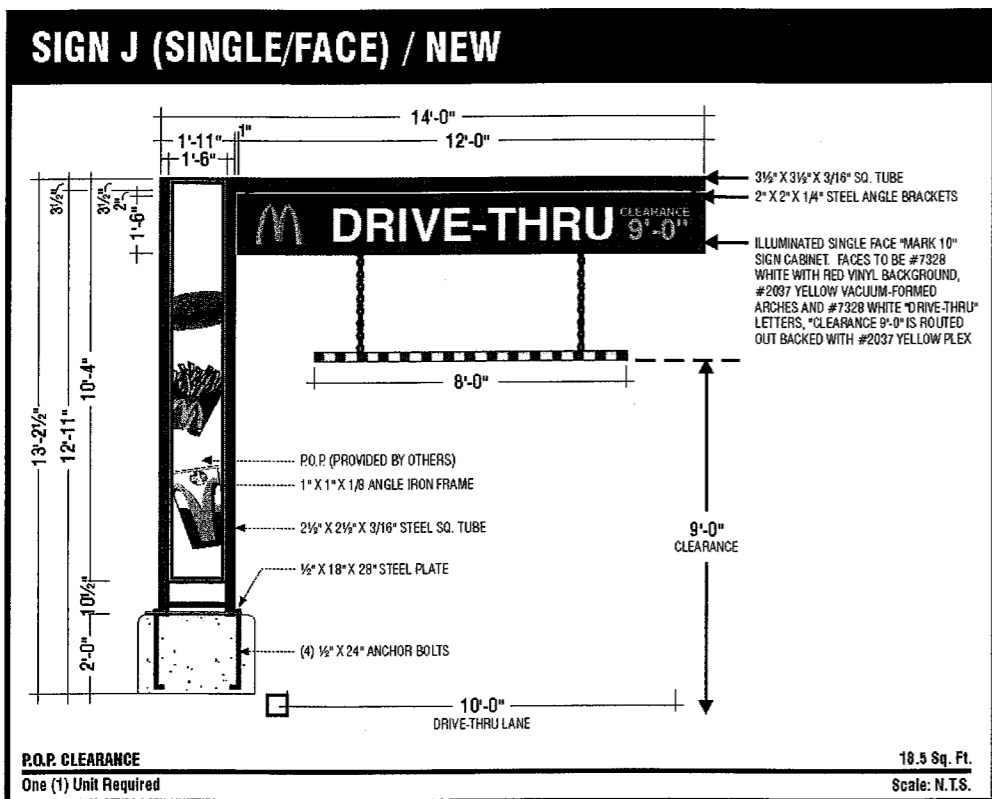
This is an original unpublished drawing
created by Superior Electrical Advertising.
It is submitted for your approval. It is not
to be shown to anyone outside of your
organization, nor is it to be reproduced,
copied or exhibited in any fashion. The
changing of colors, sizes, materials or
illumination method does not alter the
design. Ownership of this design is held
by Superior Electrical Advertising, Inc.
Authorization to use this design in any
fashion must be obtained in writing from
Superior Electrical Advertising, Inc.

© SEA 2002

Note: The Colors depicted here are a
graphic representation. Actual colors
may vary. See color specifications.



APPROVED
Scale: 1/2" = 1'-0"
BY: PLOS-140-44 to SUP
AS NOTED
DATE: 5/17/06
**CITY OF OXNARD
PLANNING**





superior
electrical advertising

1700 West Anaheim Street
Long Beach, California
90813-1195
phone: 562.495.3808
facsimile: 562.435.1867

www.superiorsigns.com
design@superiorsigns.com

Project:
McDonald's

Address:
511 South Rose Ave.,
Oxnard, CA

Account Manager:
Stan Janocha

Designer:
L. Ramirez

Scale:
AS NOTED

Design No.:
02-07-3001

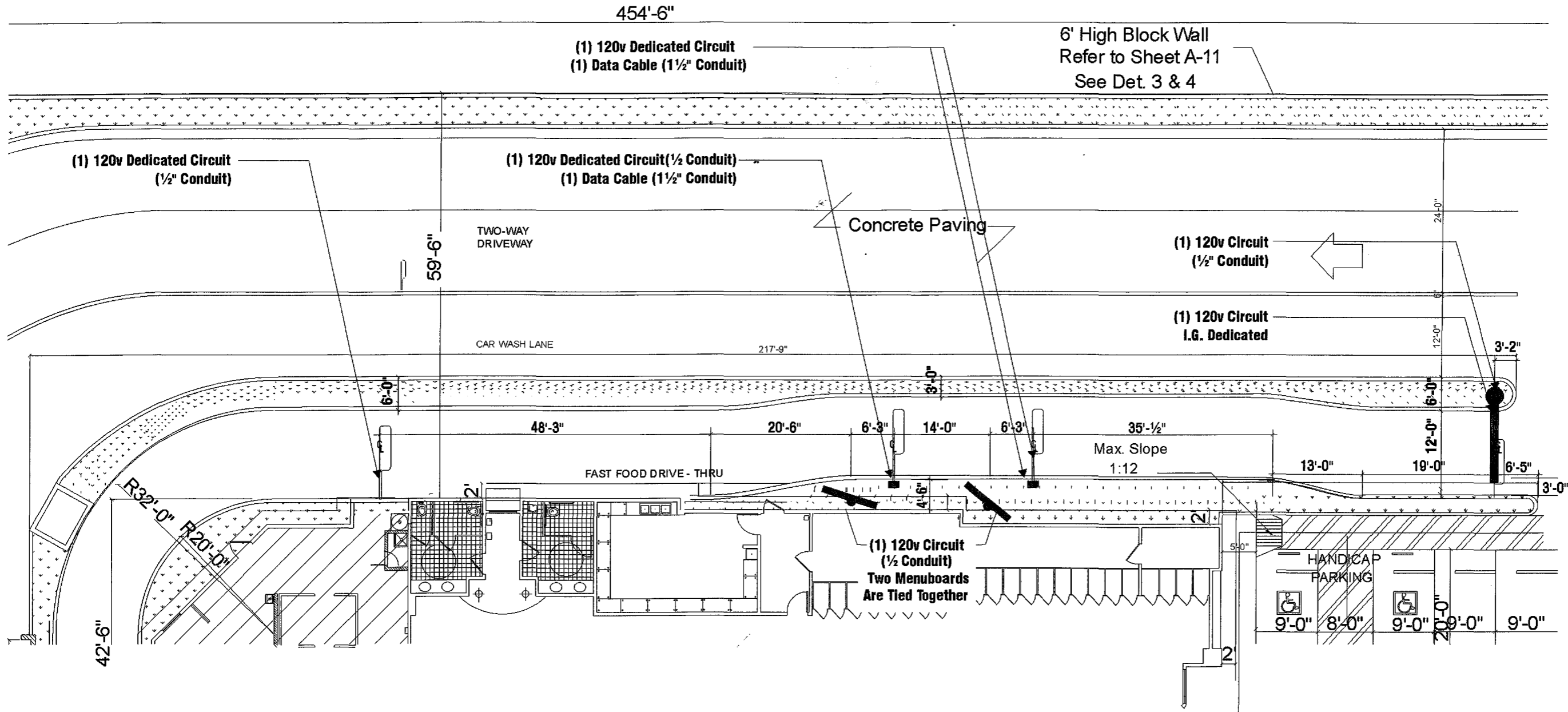
Date:

Reg. No.:

Revisions:
R8 12/1/04 LR Change the height of sign M
R9 12/5/04 LR Elim. reveals on sign M, N, O
R10 2/28/04 LR Elim. Change planter & add
city stuff
R12 3/18/04 LR Replace express tube with
jimmy tube
R13 4/19/04 LR Move sign B
R15 6/17/04 LR Change mod signs on an
already completed store
R16 5/27/05 LR Changes to already
completed sign
R17 1/24/06 LR Change sq. footage on chart
(completed store)

Page: 12 Of: 13

This is an original unpublished drawing
created by Superior Electrical Advertising
It is submitted for your approval. It is not
to be shown to anyone outside of your
organization, nor is it to be reproduced,
copied or exhibited in any fashion. The
changing of colors, sizes, materials or
illumination method does not alter the
design. Ownership of this design is held
by Superior Electrical Advertising, Inc.
Authorization to use this design in any
fashion must be obtained in writing from
Superior Electrical Advertising, Inc.
© SEA 2002
Note: The Colors depicted here are a
graphic representation. Actual colors
may vary See color specifications.

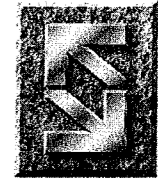


SITE PLAN
Scale: N.T.S.



SYMBOL FOR VEHICLE DETECTOR LOOP

APPROVED
BY: PZ 05-140-44408UP99-5-8
DATE: 5/17/06
CITY OF OXNARD
PLANNING



Superior
Electrical Advertising

1700 West Anaheim Street
Long Beach, California
90813-1195
phone: 562.495.3808
facsimile: 562.435.1867

www.superiorsigns.com
design@superiorsigns.com

Project:
McDonald's

Address:
511 South Rose Ave.,
Oxnard, CA

Account Manager:
Stan Janocha

Designer:
L. Ramirez

Scale:
AS NOTED

Design No.:
02-07-3001

Date:
5/10/06

Reg. No.:

Revisions:
R8 12/10/04 LR Change the height of sign M
R9 12/20/04 LR Elim. reveals on sign M, N, O
R10 2/08/04 LR Elim. Change planter & add city staff
R12 3/18/04 LR Replace express tube with jiffy tube
R13 4/19/04 LR Move sign B
R15 6/17/04 LR Change mcd signs on an already completed store
R16 5/27/05 LR Changes to already completed sign
R17 12/4/06 LR Change sq. footage on chart (completed store)

Page: 13
Of: 13

This is an original unpublished drawing created by Superior Electrical Advertising. It is submitted for your approval. It is not to be shown to anyone outside of your organization, nor is it to be reproduced, copied or exhibited in any fashion. The changing of colors, sizes, materials or illumination method does not alter the design. Ownership of this design is held by Superior Electrical Advertising, Inc. Authorization to use this design in any fashion must be obtained in writing from Superior Electrical Advertising, Inc.

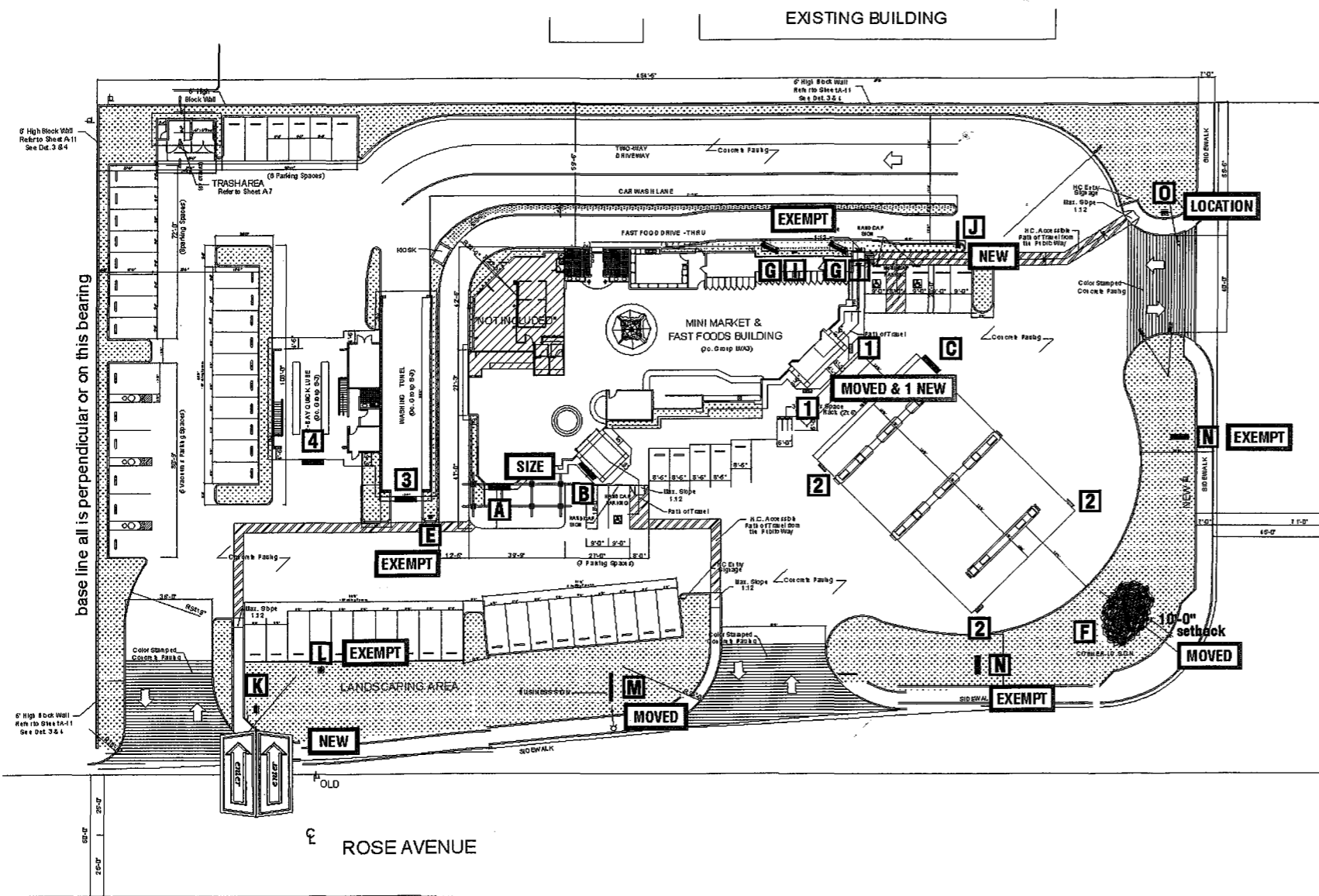
© SEA 2002
Note: The Colors depicted here are a graphic representation. Actual colors may vary. See color specifications.

SIGN SCHEDULE

NO.	DESCRIPTION	ILLUM.	AREA	QTY.	TOTAL
A	McDONALD'S LTRS/LOGO	Y	22.2	1	22.2
B	McDONALD'S LTRS/LOGO	Y	36.0	1	36.0
C					
F	POLE SIGN	Y	79.5	2	159.0
J	P.O.P. CLEARANCE	Y	18.5	1	18.5
M	MONUMENT SIGN	Y	21.8	1	43.6
O	DIRECTIONAL	Y	9.0	1	18.0
1	CIRCLE K LOGO	Y	25.0	2	50.0
2	76 LOGO	Y	6.25	3	18.75
3	CAR WASH LTRS	Y	11.7	1	11.7
4	JIFFY LUBE	Y	22.74	1	22.74
N	PRICE SIGN (double face)	Y	2.65	2	10.69
TOTAL SQ. FOOTAGE =					411.18

SIGN SCHEDULE - EXEMPT = □

NO.	DESCRIPTION	ILLUM.	AREA	QTY.	TOTAL
E	NON-ILLUM. SIGN	N	3.0	1	3
G	MENUBOARD	Y	43.3	2	86.6
I	C.O.D.	Y	6.8	2	13.7
K	DIRECTIONAL SIGNS	Y	2.8	1	5.7
L	FLAG POLE	N		1	
N	PRICE SIGN	Y	5.8	2	32
TOTAL SQ. FOOTAGE =					



SITE PLAN
Scale: 1/64" = 1'-0"

APPROVED
BY: P2 05-140-44 fdsup99-5-8
DATE: 5/17/06
CITY OF OXNARD
PLANNING