

## Calculate Water Use (sample)

### 1 Meter Readings:



Reading #1  
Date: 11/4/08

Reading #2  
Date: 11/11/08

7 # of days  
between readings

Odometer  
Reading: 04213  
(cubic feet)

Odometer  
Reading: 04247  
(cubic feet)

### 2 Water Use (cubic feet):

Current: 04247

Previous: - 04213

= 3.4 (HCF usage)

### 3 Water Use (gallons):

Cubic feet used: 3.4

**x 748 gallons**

= 2,543.2 (gallons)

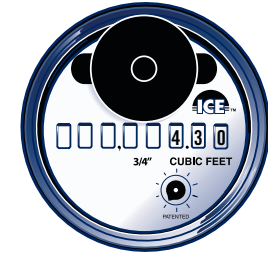
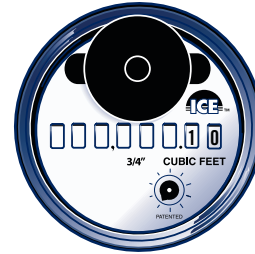
### 4 Average Daily Water Use :

Gallons used: 2,543.2  
÷ 7 (# of days between readings)

= 363 (average gallons/day)

## Calculate Water Use (worksheet)

### 1 Meter Readings:



Reading #1  
Date: \_\_\_\_\_

Reading #2  
Date: \_\_\_\_\_

# of days  
between readings

Odometer  
Reading: \_\_\_\_\_  
(cubic feet)

Odometer  
Reading: \_\_\_\_\_  
(cubic feet)

### 2 Water Use (cubic feet):

Current: \_\_\_\_\_

Previous: - \_\_\_\_\_

= \_\_\_\_\_ (HCF usage)

### 3 Water Use (gallons):

Cubic feet used: \_\_\_\_\_

**x 748 gallons**

= \_\_\_\_\_ (gallons)

### 4 Average Daily Water Use :

Gallons used: \_\_\_\_\_  
÷ \_\_\_\_\_ (# of days between readings)

= \_\_\_\_\_ (average gallons/day)