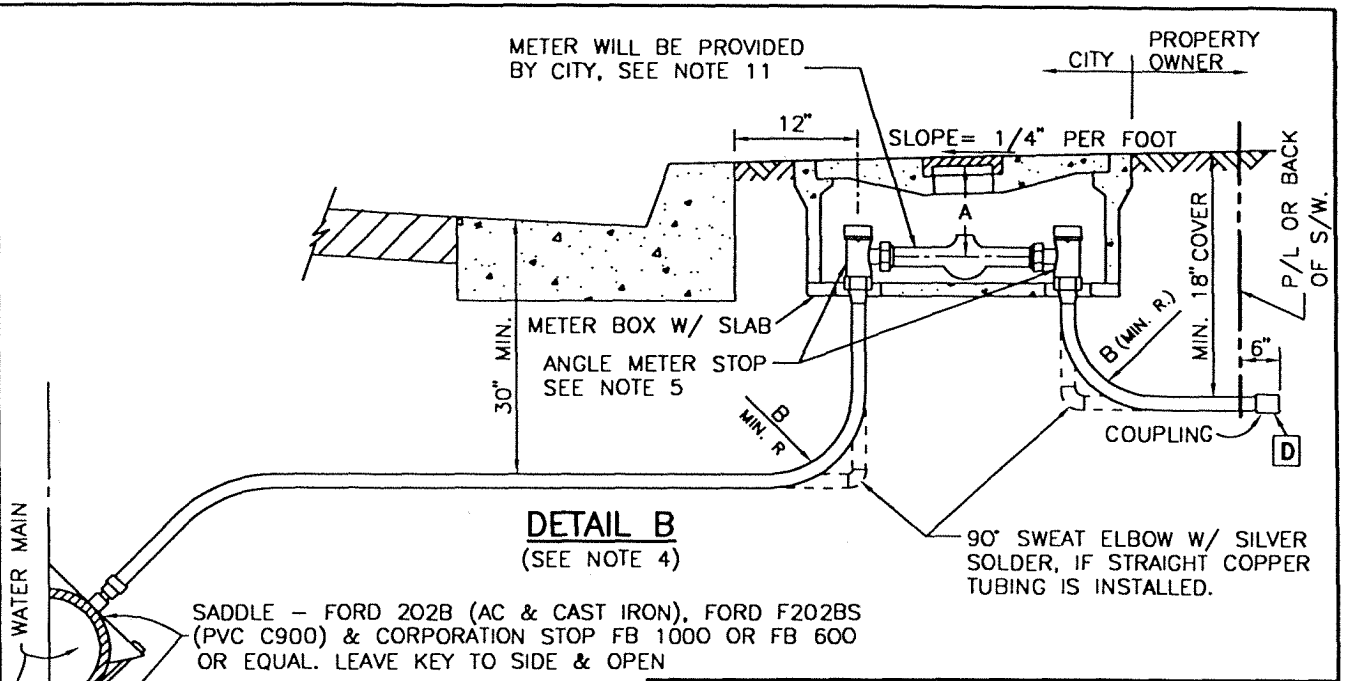


REV.	APPR. BY	DATE

REV.	APPR. BY	DATE



SADDLE - FORD 202B (AC & CAST IRON), FORD F202BS (PVC C900) & CORPORATION STOP FB 1000 OR FB 600 OR EQUAL. LEAVE KEY TO SIDE & OPEN

METER BOX

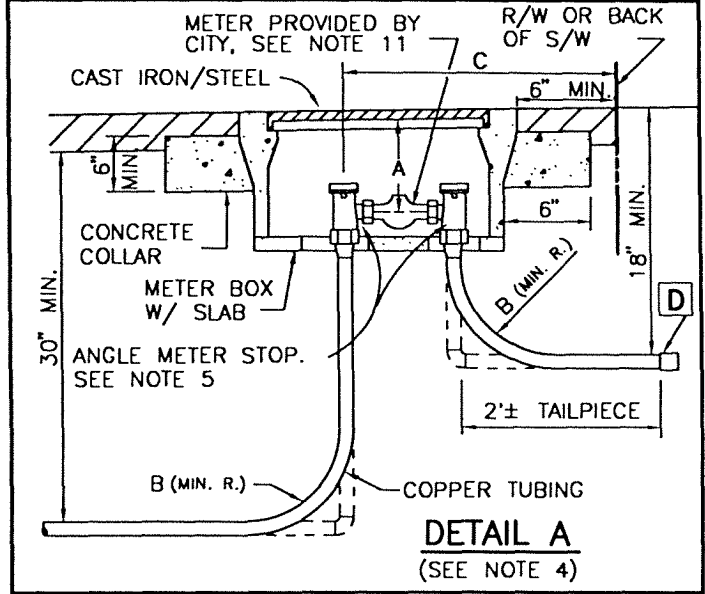
1 1/2" BROOKS 65S OR EQUAL
2" BROOKS 66s OR EQUAL

DIMENSIONS

SERVICE SIZE	A	B	C
1 1/2"	9"	13"	26"
2"	10"	18"	33"

1/2"± TOLERANCE ALLOWED ON ALL SIZES

D TAKE CONSTRUCTION WATER FROM THIS POINT ONLY.



NOTES:

1. CONTRACTOR SHALL PROVIDE 48 HOURS NOTICE PRIOR TO REQUESTING METER INSTALLATION.
2. SEE STANDARD DRAWING NO. 305 FOR P.E. SERVICES.
3. SERVICES SHALL NOT BE INSTALLED ON PRIVATE PROPERTY WITHOUT PUBLIC UTILITIES EASEMENT.
4. METER BOXES INSTALLED IN DRIVEWAY, ALLEY OR TRAFFIC LOCATIONS REFER TO DETAIL "A". FOR PARKWAYS, SHOULDERS, ETC. SEE DETAIL "B".
5. 1 1/2" & 2" SERVICES SHALL HAVE FLANGED ANGLE METER STOPS, FORD FV-23 (FLARE), FORD FV-43 (PACK JOINT), JONES J-4205 (COMPRESION) OR EQUAL.
6. CLOSE KEYWAYS IN METER BOX WITH PLASTIC SHINGLE OR MORTAR.
7. ALL SERVICES SHALL BE PERPENDICULAR TO THE MAIN.
8. INSTALL METER BOX 6" TO 18" FROM SIDE PROPERTY LINE AND GROUPED FOR EASE OF READING, SEE PLATE 306.
9. CONTRACTOR SHALL PROTECT ENTIRE METER ASSEMBLY FROM DAMAGE DURING CONSTRUCTION ACTIVITIES.
10. METER BOX SHALL BE SET AND ADJUSTED PRIOR TO INSTALLATION OF METER.
11. METER SHALL BE INSTALLED BY CITY. CONTRACTOR SHALL MAKE NECESSARY ARRANGEMENTS WITH WATER SERVICES PROGRAM TO COORDINATE INSTALLATION.

	STANDARD 1 1/2" - 2" COPPER SERVICE INSTALLATION		STANDARD PLAN 2002
	DRAWN: STAFF Department of Public Works	CKD.: STAFF	APPR. <i>Granville M. Bowman</i> Granville M. Bowman