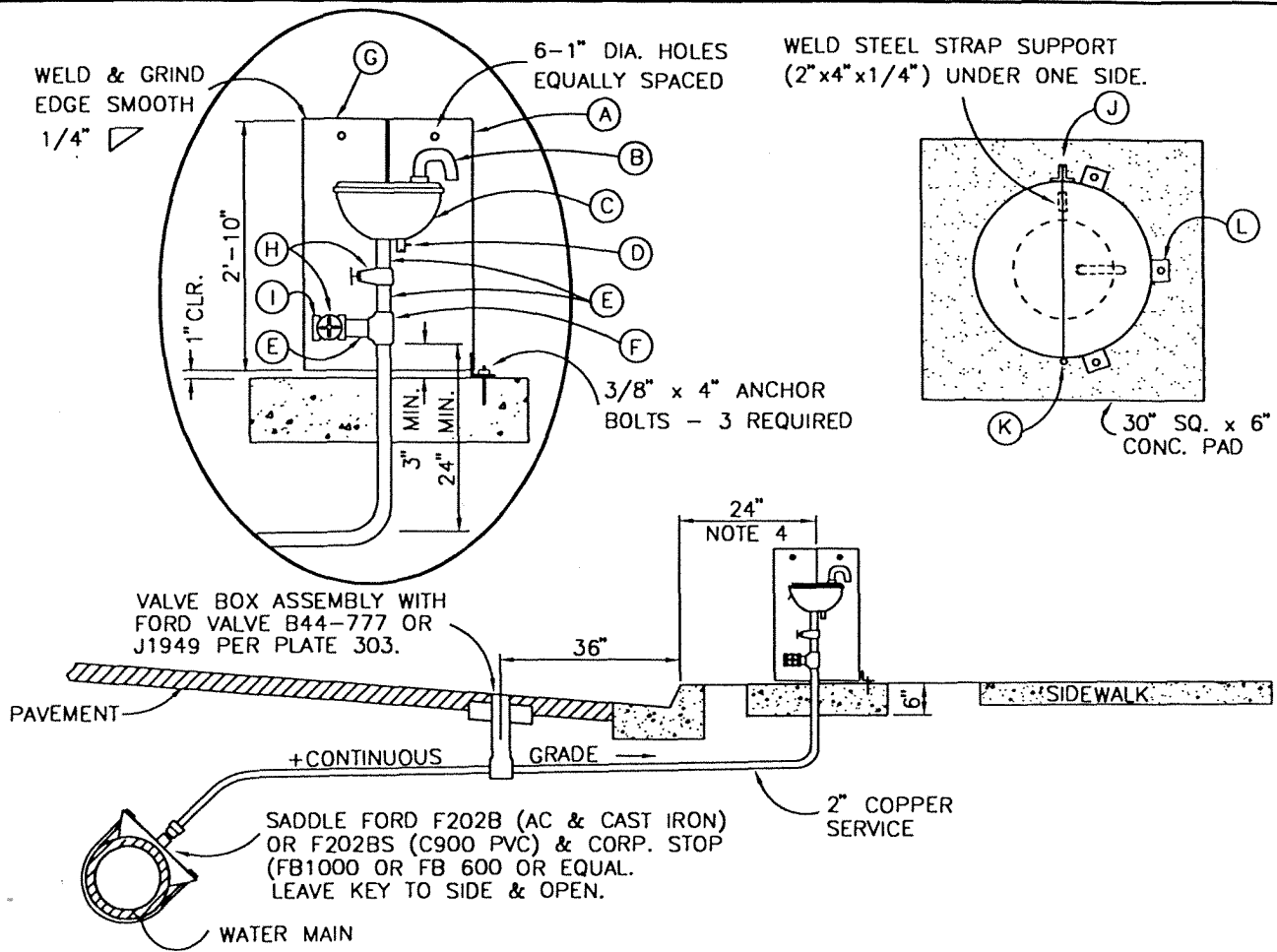


WELD & GRIND  
EDGE SMOOTH  
1/4"

6-1" DIA. HOLES  
EQUALLY SPACED

WELD STEEL STRAP SUPPORT  
(2"x4"x1/4") UNDER ONE SIDE.



VALVE BOX ASSEMBLY WITH  
FORD VALVE B44-777 OR  
J1949 PER PLATE 303.

PAVEMENT

+CONTINUOUS GRADE

24"  
NOTE 4

2" COPPER  
SERVICE

SADDLE FORD F202B (AC & CAST IRON)  
OR F202BS (C900 PVC) & CORP. STOP  
(FB1000 OR FB 600 OR EQUAL.  
LEAVE KEY TO SIDE & OPEN.

WATER MAIN

### MATERIALS LIST

- |  |   |
|--|---|
| (A) 20" DIA. STA. STEEL PIPE UNLESS OTHERWISE INDICATED            | (H) 2" BRASS BALL VALVE   |
| (B) 2 - 90° STREET ELBOWS  | (I) 2" x 2 1/2" INCREASER & 2 1/2" I.P.T. x 2 1/2" FIRE HOSE THREAD ADAPTER                 |
| (C) COMB. AIR RELEASE & AIR VAC. VALVE, APCO HEAVY DUTY MODEL 145C | (J) WELD 2-1 1/2" x 1 1/2" x 1/2" ANGLES (2" LONG) WITH 3/8" DIA. HOLE FOR PADLOCK          |
| (D) TEST DRAIN VALVE - 1/2" I.P.T. x 3/4" H.T.                     | (K) 2-3" x 3" HEAVY DUTY HINGES. WELD TO STL. PIPE (NON-REMOVABLE PINS)                     |
| (E) 2" BRASS NIPPLE (3" LONG)                                      | (L) 3-3" x 3" x 1/4" GALV. ANGLES (2" WIDE) WITH 1/2" DIA. HOLE. WELD TO PIPE ON RIGID SIDE |
| (F) 2" x 2" BRASS TEE  |   |
| (G) 1/4" STEEL PLATE   |   |

### NOTES:

1. PROTECTIVE COATING PER GENERAL REQUIREMENT SECTION.
2. BARRIERS SHALL BE PROVIDED FOR ALL INSTALLATIONS IN UNIMPROVED AREAS. (REFER TO PLATE 301)
3. AIR VACUUM RELEASE VALVES SHALL BE INSTALLED AT HIGH POINT OF MAIN WHEN THE ELEVATION OF THE PIPE IS CHANGED BY 1/2 DIAMETER OR MORE FROM BOTH DIRECTIONS CAUSING AIR TO BE TRAPPED.
4. IF SIDEWALK IS ADJACENT TO CURB AND 5' OR LESS IN WIDTH, THEN A AIR-VAC. VALVE ASSEMBLY SHALL BE PLACED 18" FROM FACE OF CURB.
5. ALL STEEL ENCLOSURE PARTS SHALL BE GALVANIZED AFTER FABRICATION.

CITY OF  
**Oxnard**

## COMBINATION AIR-VACUUM VALVE INSTALLATION

DRAWN: STAFF CKD.: STAFF

Department of Public Works

APPR.

Granville M. Bowman

STANDARD PLAN  
2002

PLATE 308

SHEET 1 OF 1

REV. APPR. BY DATE

REV. APPR. BY DATE