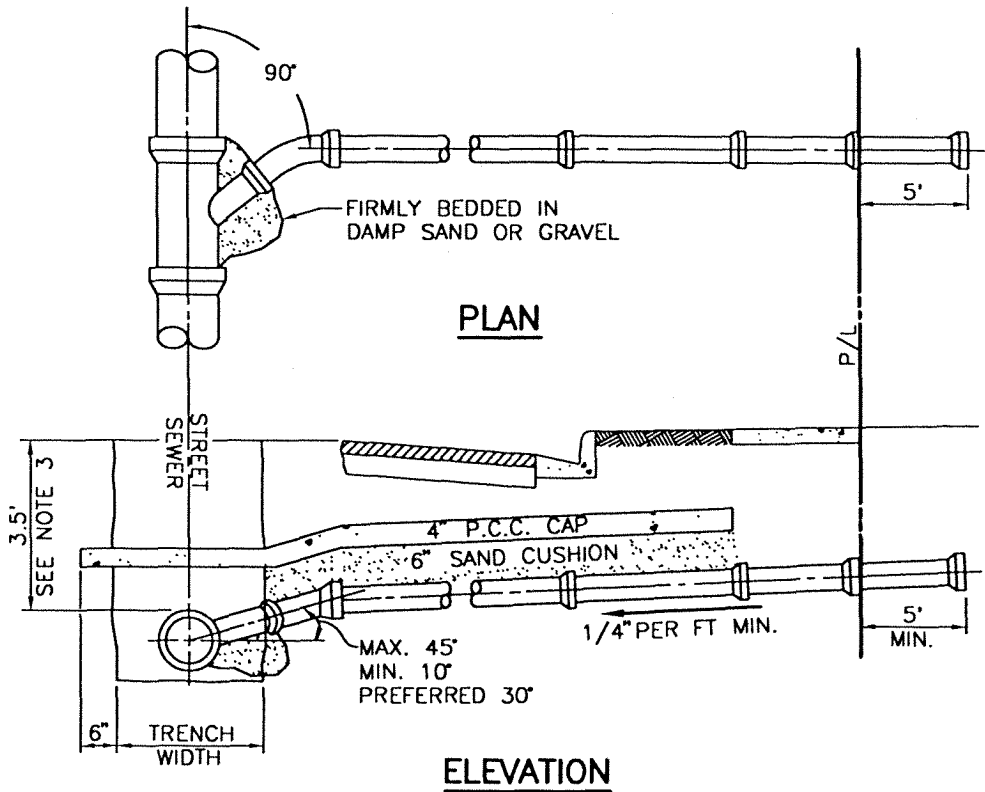



REV.	APPR. BY	DATE

REV.	APPR. BY	DATE



**NOTES:**

1. ON EXISTING SEWER, INSTALL APPROVED STANDARD SADDLE OR PREMOLDED "Y" AND STRONGBACK CALDER COUPLING. THE MAIN SHALL BE CORED WHEN USING A SADDLE.
2. IF SLOPE EXCEEDS 45°, SEE PLATE 406.
3. WHEN COVER OVER EXISTING SEWER MAIN OR LATERAL IS LESS THAN 3.0', A P.C.C. CAP IS REQUIRED FOR TRENCH WIDTH PLUS 6" EACH SIDE OF TRENCH ON MAIN AND LATERALS.
4. INSTALL A PREFORMED "Y" OR MANHOLE IF THE SERVICE LATERAL IS LARGER THAN 1/2 I.D. OF THE MAIN SEWER I.D..
5. MARK "S" ON CURB FACE.
6. LATERAL SHALL BE PERPENDICULAR TO THE MAIN WHENEVER POSSIBLE.
7. PIPE MATERIAL FOR LATERAL WITHIN STREET RIGHT-OF-WAY SHALL BE V.C.P. OR PVC (SDR 35).

	<b>HOUSE CONNECTION (6" &amp; BELOW)</b>		STANDARD PLAN 2002
	DRAWN: STAFF	CKD.: STAFF <i>LB</i>	APPR. <i>Granville M. Bowman</i> Granville M. Bowman
Department of Public Works			PLATE 405 SHEET 1 OF 1