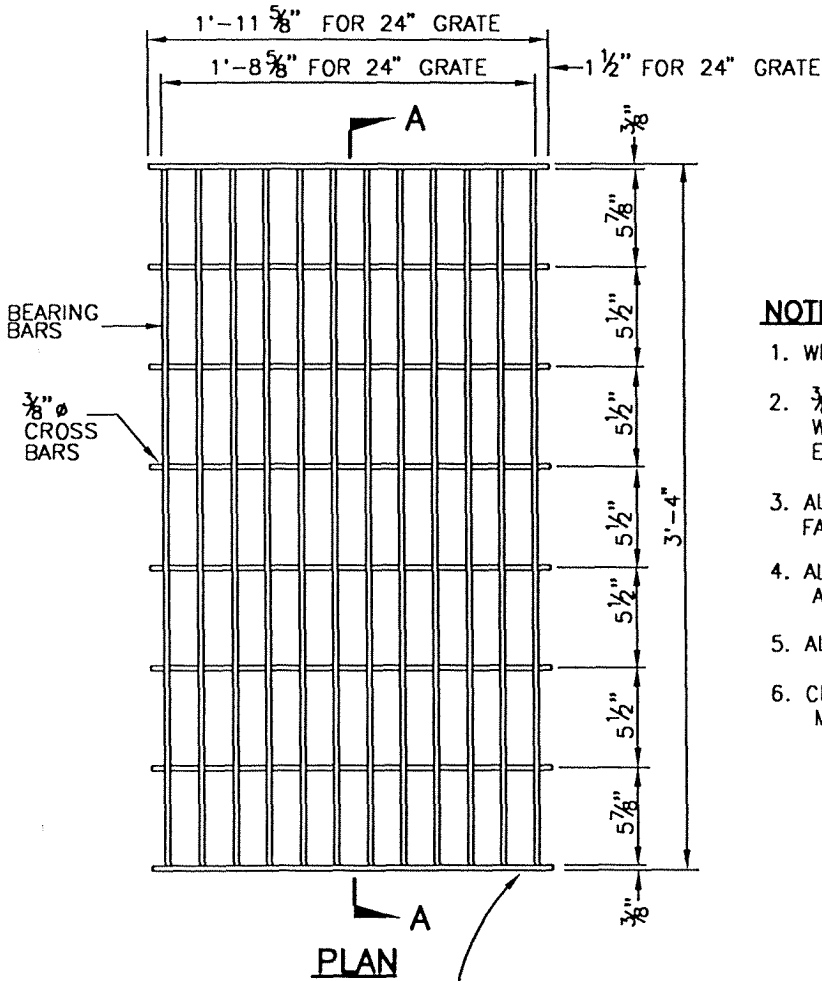


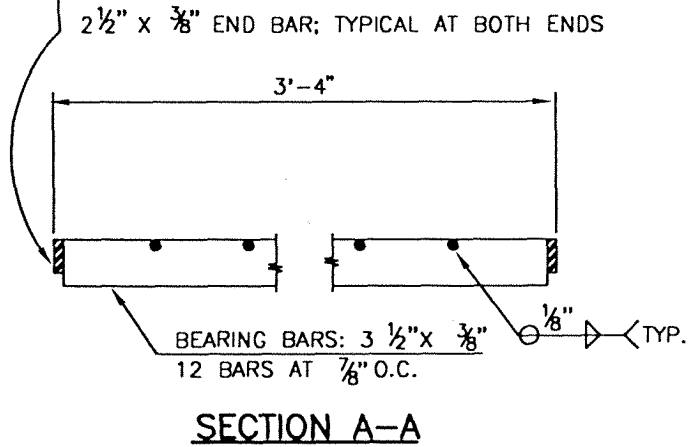
| | | |
|------|----------|------|
| REV. | APPR. BY | DATE |
| | | |

| | | |
|------|----------|------|
| REV. | APPR. BY | DATE |
| | | |



NOTES:

1. WEIGHT OF 24" GRATE = 192 LBS.
2. 3/8" Ø CROSS BARS MAY BE FILLET WELDED, RESISTANCE WELDED, OR ELECTRO-FORGED TO BEARING BARS.
3. ALL PARTS ARE TO BE GALVANIZED AFTER FABRICATION.
4. ALL DIMENSIONS ARE FINISHED DIMENSIONS, AND INCLUDE GALVANIZING.
5. ALL THREADS SHALL BE NATIONAL COARSE.
6. CENTER SUPPORT ASSEMBLY REQUIRED WHEN MORE THAN ONE GRATE IS CALLED FOR.



ATTENTION: PREFER CURB OPENING C.B., NO C.B. WITH GRATES IS PERMITTED WITHOUT PRIOR APPROVAL.



CITY OF

BICYCLE PROOF GRATE DETAILS

STANDARD PLAN
2002

DRAWN: STAFF CKD.: STAFF *LB*
Department of Public Works

APPR. *Granville M. Bowman*
Granville M. Bowman

PLATE 511

SHEET 1 OF 1