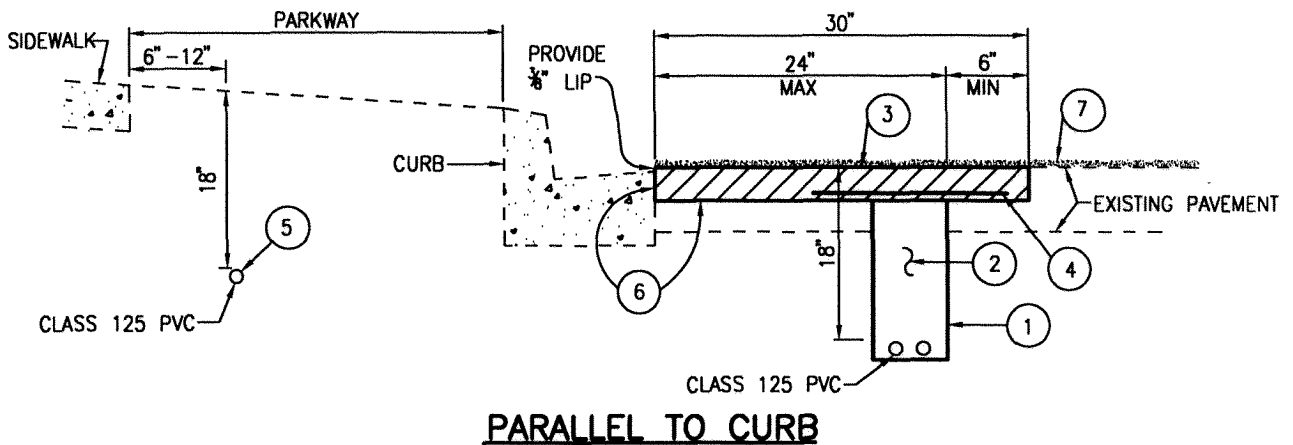
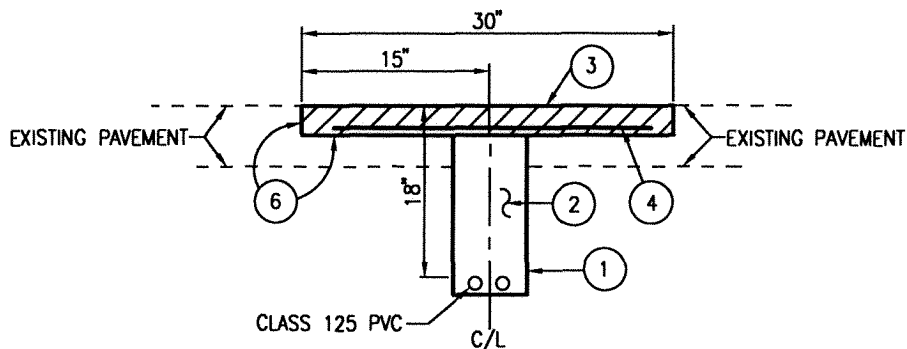


REPAVING REQUIREMENT FOR ROCKSAW TRENCHES IN CITY STREETS/ALLEYS AND PARKWAYS



PARALLEL TO CURB



TRANSVERSE TO CURB

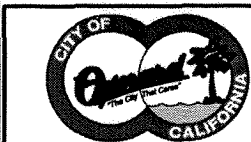
NOTES:

1. ROCKSAW TRENCH 4"-6" WIDE, MAX. 24" FROM GUTTER FACE, 18" COVER OVER CONDUITS.
2. FILL TRENCH TO TOP WITH 1½ SACK MIX CEMENT/SAND SLURRY.
3. GRIND FROM GUTTER LIP TOWARDS STREET CENTERLINE A MINIMUM OF 30" WIDE AND 2" DEEP ON PARALLEL TRENCHES & 30" WIDE AND 2" DEEP CENTERED ON TRANSVERSE TRENCHES OR AS DIRECTED BY CITY OF OXNARD PUBLIC WORKS INSPECTOR AND PLACE C-2 PG 64-10 ASPHALT COMPACTED WITH A ROLLER TO 95%.
4. PLACE 3.5 OUNCE PETROMAT 18" WIDE CENTER ON TRENCH & TACK WITH 0.23 GAL/SY SS-1H.
5. PARKWAY CONSTRUCTION: PERMITEE TO SUBMIT DETAILS FOR APPROVAL. ALL APRONS RIBBON GUTTERS, RESIDENTIAL HARDSCAPE & RESIDENTIAL SOFTSCAPE SHALL BE RESTORED/REPAIRED/OR REPLACED AS ORIGINALLY FOUND AND AS DIRECTED BY THE CITY OF OXNARD PUBLIC WORKS INSPECTOR.
6. TACK COAT 0.10 GAL/SY SS-1H ALL VERTICAL & HORIZONTAL SURFACES OR UNLESS NOTED OTHERWISE.
7. TYPE II SLURRY SEAL PLACED AT 16#/SY. SLURRY SEAL SHALL EXTEND FROM THE GUTTER LIP TO THE LANE LINE, OR AS DIRECTED BY THE PUBLIC WORKS INSPECTOR.
8. MULTIPLE PERPENDICULAR/TRANVERSE TRENCHES SPACED CLOSER THAN 500 FEET APART SHALL BE MILLED LONGITUDINALLY FROM TRENCH TO TRENCH AND CAPPED WITH A 0.13' C2 AC PG 64-10 FULL WIDTH OF THE STREET AS SHOWN ON PARALLEL TO C.
9. POT HOLES SHALL BE CONSIDERED TRENCH CUTS FOR REPAIR PURPOSES.

ROCKSAW TRENCH CUTS ARE NORMALLY NOT ALLOWED. UTILITIES ARE REQUIRED TO BE BORED, EXCEPT WHEN ALLOWED BY THE CITY ENGINEER OR REPRESENTATIVE.

REV.	DATE
APPR. BY	DATE

REV.	DATE
APPR. BY	DATE
Lou B. 7/31/06	Lou B. 9/28/06



△ ROCKSAW TRENCH

DRAWN: A. ROQUE | CKD.: B. STARR, PE

Department of Public Works

APPR. L. Balderrama, PE, City Engineer

STANDARD PLAN
2002

PLATE 603

SHEET 1 OF 1