

GENERAL NOTES

1. The purpose of this criteria is to ensure necessary to insure coordinated, performance shall be strictly enforced and shall be removed by the tenant at his expense.
2. In order to maintain consistency of sign signs shall be approved by the Landlord.
3. Prior to sign being manufactured and/or each tenant shall submit to the Landlord contractor, four (4) copies of a detailed by the tenant, and indicating conformer shall include, but are not limited to, letter styles and color specifications.
4. The tenant shall submit Landlord approval and shall pay for the required approval.
5. All signs and their installation must conform to codes. Local sign ordinances should be in this criteria.
6. The tenant shall pay for all signs and that sign contractor shall provide a full.
7. It is the responsibility of the sign contractor to obtain and service prior to distribution conduits, conductor, and/or transformer "signable area" shall be permitted. Any construction.

SPECIFICATIONS:

SIGN TYPE "A" Tenant Fascia Sign

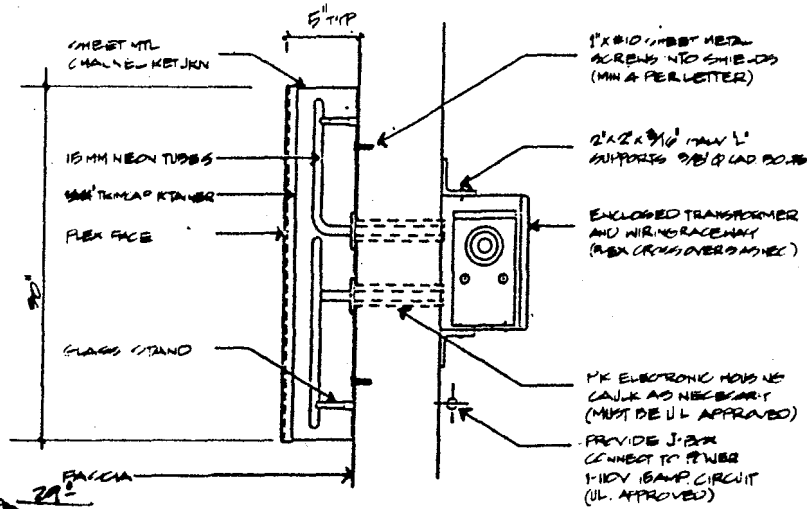
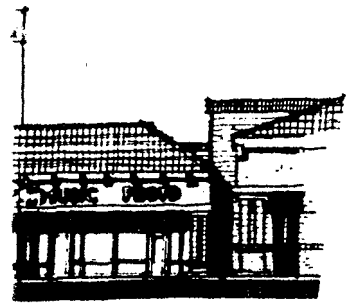
Tenant shall be required to install one (1) channel letters which are 5" deep with White painted returns. Faces shall be 3/4" the Frazee white enamel color specified a frontage, letter height shall be 30" unless will be permitted providing the symbol height. Letter style layout, and face color approval. See schematic Sign A detail.

SIGN TYPE "B" Tenant Window Sign

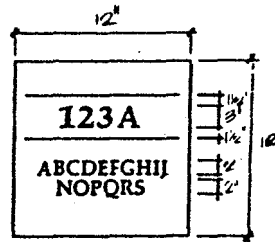
Tenant may install, in window panel adjacent inches of professionally handpainted decorative approved type style. The maximum letter limited to business hours, telephone number business instructions. See schematic sign detail.

SIGN TYPE "C" Tenant Rear Door Sign

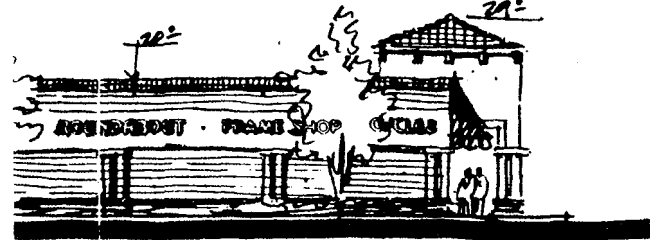
Tenant shall be required to install one (1) sign number. Sign panel to be 1/8" x 12" with black machine-cut vinyl graphics in detail.



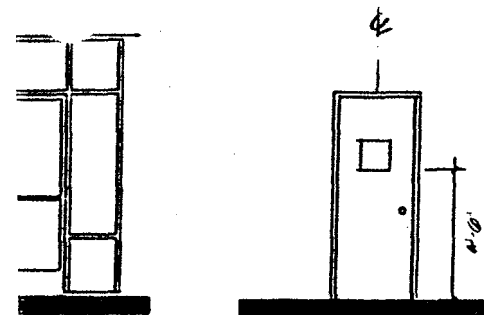
DETAIL SIGN TYPE "A"



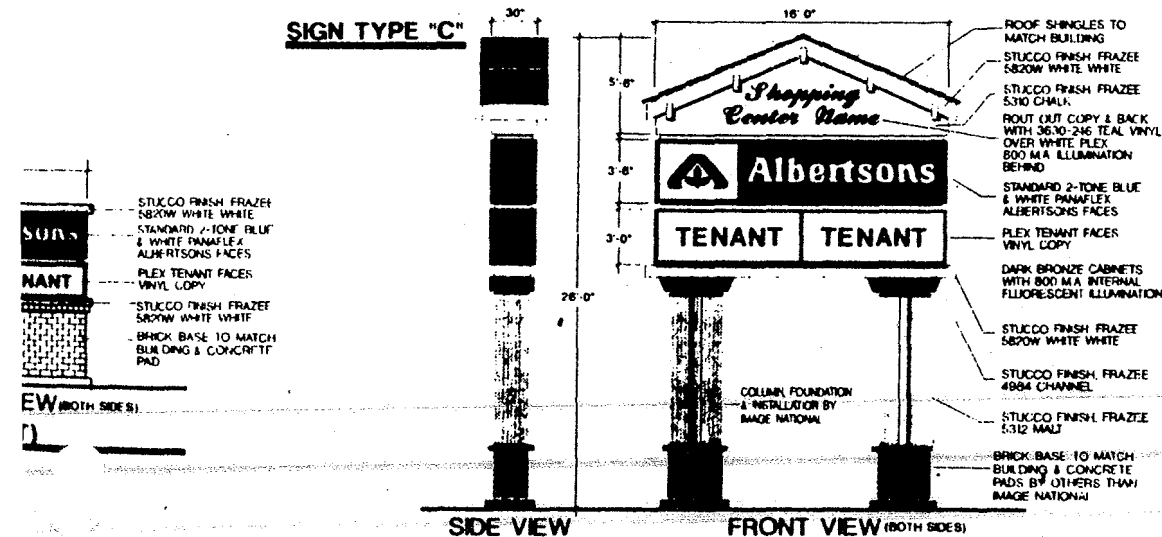
SIGN TYPE "C" LAYOUT



FRONT ELEVATION



SIGN TYPE "C"



PYLON SIGN (VENTURA ROAD)

SCALE 1/4" = 1'-0"

A PROJECT FOR •



Marketplace F

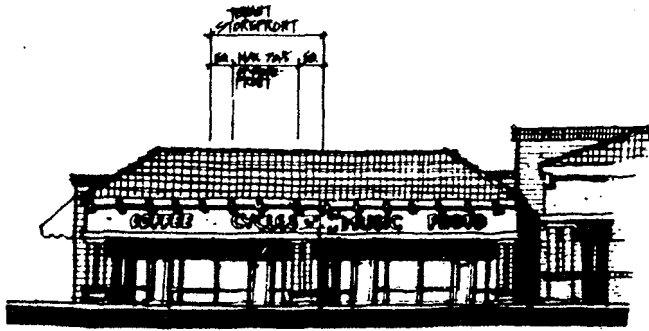
Shopping Center Developer

13522 Newport Avenue

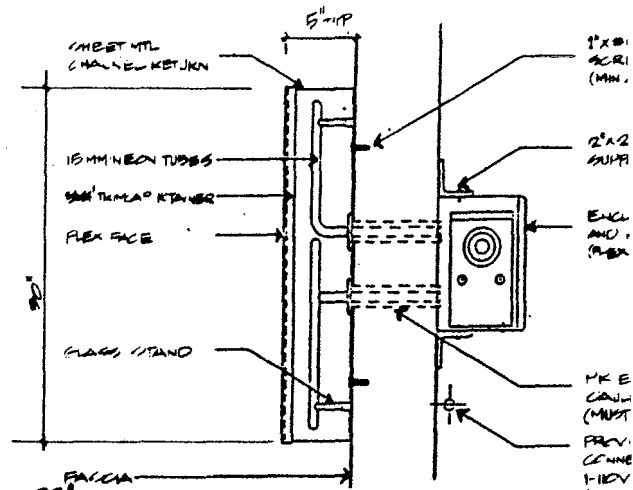
Tustin, CA 92680

(714) 731-8888

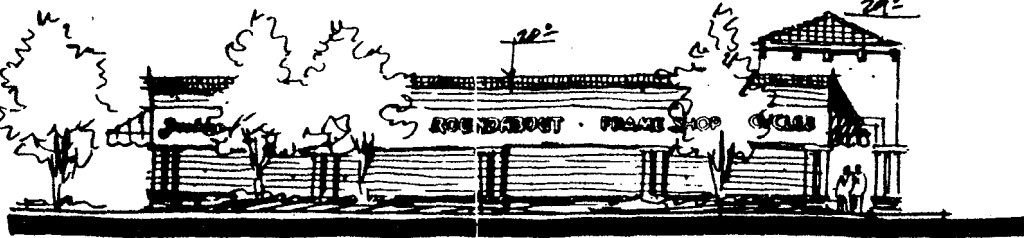
FAX (714) 730-3525



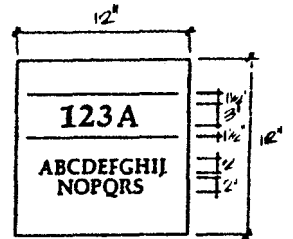
SIGN TYPE "A"
SCALE 3/32" = 1'-0"



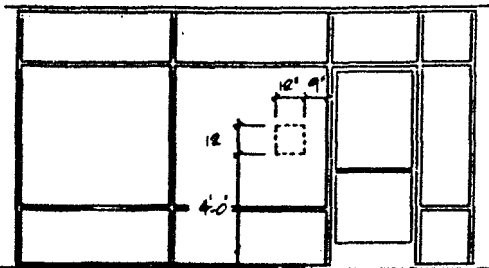
DETAIL SIGN TYPE "A"



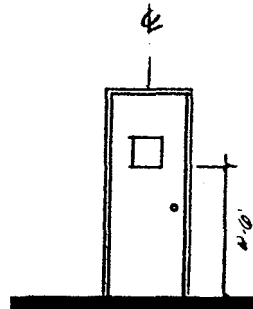
SIGN TYPE "A" (STREET ELEVATION)
SCALE 3/32" = 1'-0"



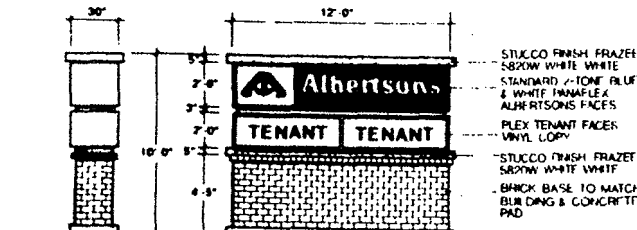
SIGN TYPE "C" LAYOUT



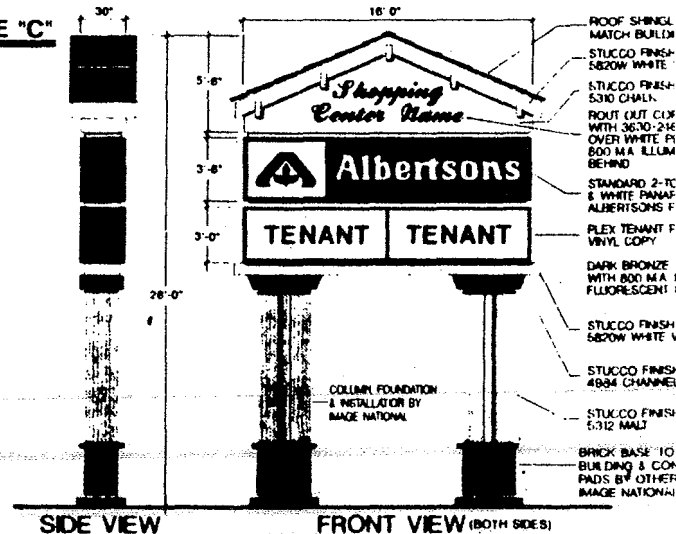
SIGN TYPE "B"



SIGN TYPE "C"



MONUMENT SIGN (5TH STREET)
SCALE 1/8" = 1'-0"



PYLON SIGN (VENTURA ROAD)
SCALE 1/4" = 1'-0"

SIGN CRITERIA SHOPS

GENERAL NOTES:

1. The purpose of this criteria is to establish the minimum sign standards necessary to insure coordinated, proportional exposure for all tenants. Performance shall be strictly enforced and any non-conforming signs/projections shall be removed by the tenant at his expense.
2. In order to maintain consistency of quality and design characteristics, all signs signs shall be approved by the Landlord.
3. Prior to sign being manufactured and/or applying for any governmental permits, each tenant shall submit to the Landlord for approval, through the sign contractor, four (4) copies of a detailed drawing of his proposed signs, signed by the tenant, and indicating conformance with these criteria. Such submittals shall include, but are not limited to, pertinent dimensions, details, location, letter styles and color specifications.
4. The tenant shall submit Landlord approved drawings to all agencies requiring approval and shall pay for the required approvals and permits.
5. All signs and their installation must comply with local building and electrical codes. Local sign ordinances should be consulted for requirements not covered in this criteria.
6. The tenant shall pay for all signs and their installation and maintenance, except that sign contractor shall provide a full one (1) year electrical warranty.
7. It is the responsibility of the sign company to verify all conduit and transformer locations and service prior to fabrication. No exposed race ways, cross overs, conduits, conductor, and/or transformers. No projections above or below the "signable area" shall be permitted. Any required patching shall match existing construction.
8. Sign contractor shall provide necessary fastenings and bracings to securely install the sign.
9. All signs must be installed not later than the date the tenant opens for business.
10. Exceptions: Any exception to these standards must be reviewed and approved in writing by Landlord prior to fabrication of any sign.

SPECIFICATIONS:

SIGN TYPE "A" Tenant Fascia Sign

Tenant shall be required to install one (1) sign comprised of internally illuminated channel letters which are 5" deep with white enamel (CTM Frazee #5320W 'White White') painted returns. Faces shall be 3/16" acrylic. 3/4" trim cap at edges shall be the Frazee white enamel color specified above. Sign length is maximum 70% of store frontage, letter height shall be 30" unless Landlord agrees otherwise. Registered logos will be permitted providing the symbol is not more than 30% of the capital letter height. Letter style layout, and face color to be selected by tenant subject to Landlord approval. See schematic Sign A detail.

SIGN TYPE "B" Tenant Window Sign

Tenant may install, in window panel adjacent to entry door, not more than 144 square inches of professionally handpainted decal or white machine-cut vinyl graphics in approved type style. The maximum letter height is 2". The copy for this sign is limited to business hours, telephone numbers, emergency information, or other business instructions. See schematic sign detail.

SIGN TYPE "C" Tenant Rear Door Sign

Tenant shall be required to install one (1) rear door sign indicating business name and suite number. Sign panel to be 1/8" x 12" aluminum painted to match rear door color with black machine-cut vinyl graphics in approved type style. See schematic Sign C detail.

1" X 10" METAL
ACROSS TWO SIDES
(MIN 4 PER LETTER)

2" X 2" SIGN
SUPPORTS 9/8" X 1/2" X 1/2"

ENCLOSED TRANSFORMER
AND WIRING RACEWAY
(SEE CROSS OVER SHEET)

W/ ELECTRONIC HOUSING
CALCULATED AS NECESSARY
(MUST BE ILL APPROVED)

PROVIDE J-BOX
CONNECT TO POWER
HIDE (BAND CIRCUIT
ILL APPROVED)

SHINGLES TO
BUILDING
3 FINISH FRAZEE
WHITE WHITE
3 FINISH FRAZEE
BLACK
KIT COPY & BACK
530-246 TEAL VINYL
WHITE PLEX
& ILLUMINATION

RD 2-TONE BLUE
E PANAFLEX
SONS FACES
SHANT FACES
COPY

BRONZE CABINETS
30 M.A. INTERNAL
SCENT ILLUMINATION

1 FINISH FRAZEE
WHITE WHITE

3 FINISH FRAZEE
HANNIF

3 FIN
7/2
1/2
& CONCRETE
OTHERS THAN
TYPICAL

A PROJECT FOR •

A COMMERCIAL PROJECT AT •



Marketplace Properties
Shopping Center Development
13522 Newport Avenue, Suite 100
Tustin, CA 92680
(714) 731-8888
FAX (714) 730-3525

NEC VENTURA ROAD/5TH STREET
OXNARD, CA.