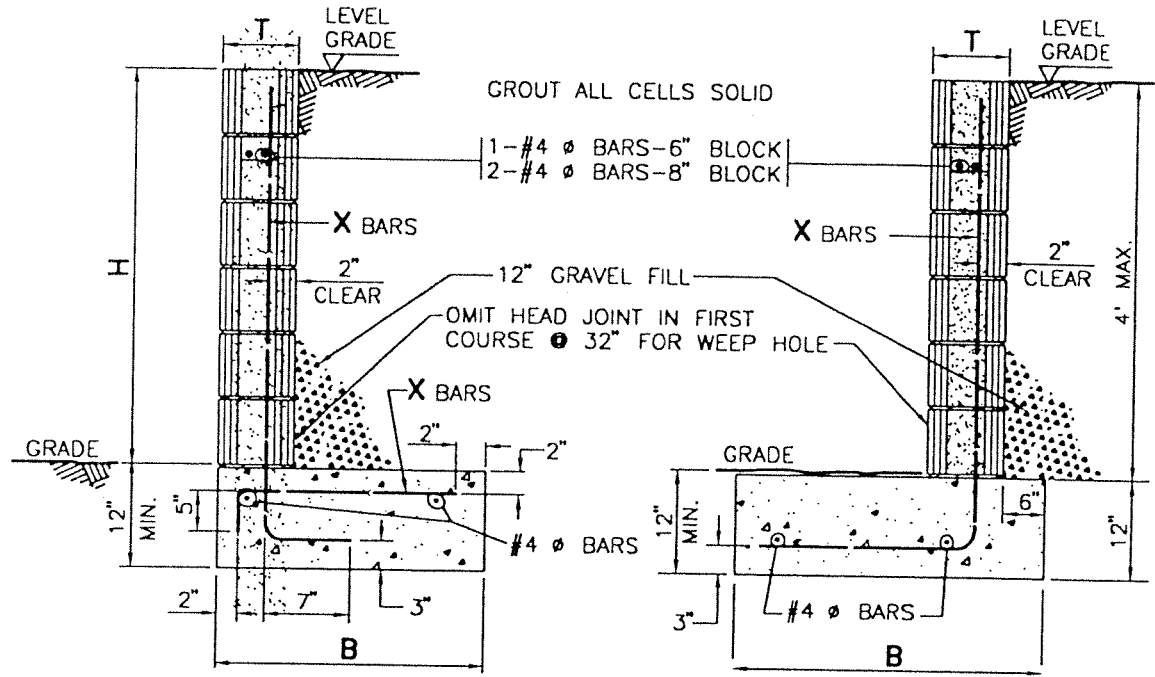


REV.	APPR. BY	DATE



POUR FOOTING AGAINST UNDISTURBED NATURAL SOIL

H	B	T	'X' BARS
2'-0"	1'-6"	6"	#3 @ 48" O.C.
3'-0"	1'-10"	6"	#3 @ 32" O.C.
4'-0"	2'-6"	8"	#4 @ 48" O.C.

GENERAL NOTES:

1. CONCRETE-2000 P.S.I. MIN. @ 28 DAYS; 480 C 2000, 4" MAXIMUM SLUMP.
2. REINFORCING STEEL-ASTM A15 & A305, MIN. $f_s=18000$ P.S.I.
3. REINFORCING STEEL LAPS-MIN. 1'-6"
4. CONCRETE MANSORY UNITS-ASTM C 90; CONCRETE BLOCK GRADE 'A'
5. GROUT-1 PART CEMENT, 2 TO 3 PARTS SAND, 2 PARTS PEA GRAVEL.
6. SOIL-MAX. 1000 P.S.I. BEARING PRESSURE.
7. BACKFILL-COHESIONLESS SOIL.
8. ALL WORKMANSHIP AND MATERIALS TO CONFORM WITH THE UNIFORM BUILDING CODE.
9. NO SURCHARGE ON WALL. CONSULT A PROFESSIONAL CIVIL OR STRUCTURAL ENGINEER FOR DESIGN OF RETAINING WALLS HAVING
 - (a) A HEIGHT GREATER THAN 4 FEET AND/OR
 - (b) ANY SURCHARGE (VEHICLE LOADING, ADJACENT FOOTING, ETC.).

REV.	APPR. BY	DATE

	RETAINING WALL		STANDARD PLAN 2002
	DRAWN: STAFF	CKD.: STAFF	PLATE 600
Department of Public Works	APPR.		SHEET 1 OF 1