



November 24, 2020

Re: Seabridge Proposed Spraying Schedule for Turf

All dates subject to change pending Environmental Conditions

Section 1 – Marked in Yellow on Map - Tuesday December 1st

Section 2 – Marked in Pink on Map –

Section 3 – Marked in Purple on Map –

Section 4 – Marked in Orange on Map –

Section 5 – Marked in Blue on Map –

All Turf areas will be secured with wood stakes and caution tape prior to the application of the Herbicide. Stakes and Tape will be removed after the recommended drying time on the product label.

Notice of intent to spray will be pasted at each location 72 hours or more prior to the commencement of any turf spraying.

City of Oxnard representatives will be notified if any adjustment in the above spraying schedule is deemed necessary due to wind, rain, or other unforeseen factors.

Please let us know if this schedule is approved and we will proceed.

Thanks,

Lee C. Opp | Branch Manager

Enhanced Landscape Management

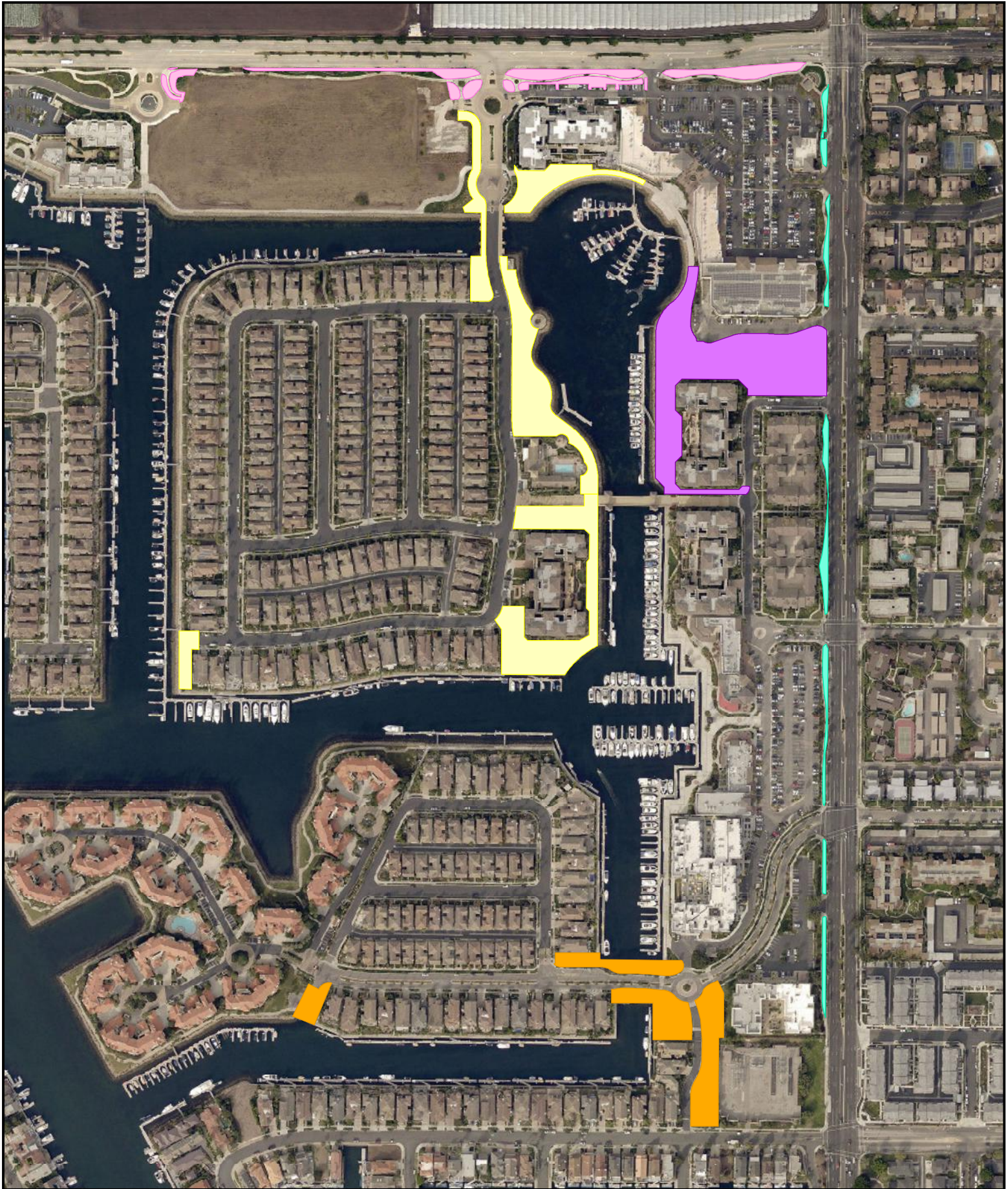
2038 N. Ventura Ave, Ventura, CA 93001

☎ 805.667.8062 F 805.628.3827 C 805.657.6631

License #450067, A, C27, D49

Enhancedlandscape.com

SEABRIDGE TURF SPRAY AREAS



175 0 175 350 Feet



This map is compiled by the City of Oxnard GIS Division, which is developed and operated solely for the convenience of the City. The City does not make any representations or warranties regarding the use, accuracy, reliability, and/or completeness of this map and no decision involving a risk of economic loss or physical injury should be made in reliance thereon.

Section	
	2
	1
	3
	4
	5

Specimen Label



Turflon® Ester Ultra

Specialty Herbicide

®Trademark of Dow AgroSciences LLC

For the control of annual and perennial broadleaf weeds and kikuyugrass in ornamental turf.

Active Ingredient:

triclopyr: 3,5,6-trichloro-2-pyridinyloxyacetic acid, butoxyethyl ester.....	60.45%
Other Ingredients.....	39.55%
Total.....	100.00%

Acid Equivalent: triclopyr – 43.46% - 4 lb/gal

Precautionary Statements

Hazards to Humans and Domestic Animals

EPA Reg. No. 62719-566

CAUTION

Causes Moderate Eye Irritation • Harmful If Swallowed • Prolonged Or Frequently Repeated Skin Contact May Cause Allergic Reactions In Some Individuals

Avoid contact with skin, eyes, or clothing. Wear gloves and protective clothing. Wash thoroughly with soap and water after handling and before eating, drinking, chewing gum, or using tobacco.

Personal Protective Equipment (PPE)

Some materials that are chemical-resistant to this product are listed below. If you want more options, follow the instructions for category E on an EPA chemical resistance category selections chart.

WPS Uses: Applicators and other handlers who handle this pesticide for any use covered by the Worker Protection Standard (40 CFR Part 170) – for this product, sod farm uses -- must wear:

- Long-sleeved shirt and long pants
- Chemical-resistant gloves (≥14 mils) such as barrier laminate, nitrile rubber, neoprene rubber, or viton
- Shoes plus socks

Non-WPS Uses: Applicators and other handlers who handle this pesticide for any use NOT covered by the Worker Protection Standard (40 CFR Part 170) – for this product, non-sod farm uses -- must wear:

- Long-sleeved shirt and long pants
- Chemical-resistant gloves
- Shoes plus socks

Follow the manufacturer's instructions for cleaning/maintaining PPE. If no such instructions for washables, use detergent and hot water. Keep and wash PPE separately from other laundry.

Engineering Controls

When handlers use closed systems, enclosed cabs, or aircraft in a manner that meets the requirements listed in the Worker Protection Standard (WPS) for agricultural pesticides (40 CFR 170.240(d)(4-6)), the handler PPE requirements may be reduced or modified as specified in the WPS.

User Safety Recommendations

Users should:

- Wash hands before eating, drinking, chewing gum, using tobacco, or using the toilet.
- Remove clothing immediately if pesticide gets inside. Then wash thoroughly and put on clean clothing.
- Remove PPE immediately after handling this product. Wash the outside of gloves before removing. As soon as possible, wash thoroughly and change into clean clothing.

First Aid

If on skin or clothing: Take off contaminated clothing. Rinse skin immediately with plenty of water for 15-20 minutes. Call a poison control center or doctor for treatment advice.

If in eyes: Hold eye open and rinse slowly and gently with water for 15-20 minutes. Remove contact lenses, if present, after the first 5 minutes, then continue rinsing eye. Call a poison control center or doctor for treatment advice.

If swallowed: Call a poison control center or doctor immediately for treatment advice. Have person sip a glass of water if able to swallow. Do not induce vomiting unless told to do so by a poison control center or doctor. Do not give anything by mouth to an unconscious person.

Have the product container or label with you when calling a poison control center or doctor, or going for treatment. You may also contact 1-800-992-5994 for emergency medical treatment information.

Environmental Hazards

This pesticide is toxic to fish. Do not apply directly to water, to areas where surface water is present, or to intertidal areas below the mean high water mark. Do not contaminate water when cleaning equipment or disposing of equipment washwaters.

This chemical has properties and characteristics associated with chemicals detected in groundwater. The use of this chemical in areas where soils are permeable, particularly where the water table is shallow, may result in groundwater contamination.

Directions for Use

It is a violation of Federal law to use this product in a manner inconsistent with its labeling.

Read all Directions for Use carefully before applying.

Do not apply this product in a way that will contact workers or other persons, either directly or through drift. Only protected handlers may be in the area during application. For any requirements specific to your state or tribe, consult the agency responsible for pesticide regulation.

Agricultural Use Requirements

The requirements in this box apply to sod farm uses.

Use this product only in accordance with its labeling and with the Worker Protection Standard, 40 CFR part 170. This standard contains requirements for the protection of agricultural workers on farms, forests, nurseries, and greenhouses, and handlers of agricultural pesticides.

It contains requirements for training, decontamination, notification, and emergency assistance. It also contains specific instructions and exceptions pertaining to the statements on this label about personal protective equipment (PPE) and restricted-entry interval. The requirements in this box only apply to uses of this product that are covered by the Worker Protection Standard.

Do not enter or allow worker entry into treated areas during the restricted entry interval (REI) of 12 hours.

PPE required for early entry to treated areas that is permitted under the Worker Protection Standard and that involves contact with anything that has been treated, such as plants, soil, or water, is:

- Coveralls
- Chemical-resistant gloves (≥14 mils) such as barrier laminate, nitrile rubber, neoprene rubber, or viton
- Shoes plus socks

Non-Agricultural Use Requirements

The requirements in this box apply to all use sites on this label except for sod farm uses.

The requirements in this box apply to uses of this product that are NOT within the scope of the Worker Protection Standard for Agricultural Pesticides (40 CFR Part 170). The WPS applies when this product is used to produce agricultural plants on farms, forests, nurseries, or greenhouses.

Entry Restrictions for Non-WPS Uses: For applications to turf other than sod farms or turf grown for seed, do not allow entry into areas until sprays have dried.

Storage and Disposal

Do not contaminate water, food, or feed by storage and disposal. Open dumping is prohibited.

Pesticide Storage: Store above 28°F or agitate before use.

Pesticide Disposal: Wastes resulting from the use of this product must be disposed of on site or at an approved waste disposal facility.

Nonrefillable containers 5 gallons or less:

Container Handling: Nonrefillable container. Do not reuse or refill this container. Offer for recycling if available or puncture and dispose of in a sanitary landfill, or by incineration, or by other procedures allowed by state and local authorities.

Triple rinse or pressure rinse container (or equivalent) promptly after emptying. **Triple rinse** as follows: Empty the remaining contents into application equipment or a mix tank and drain for 10 seconds after the flow begins to drip. Fill the container 1/4 full with water and recap. Shake for 10 seconds. Pour rinsate into application equipment or a mix tank or store rinsate for later use or disposal. Drain for 10 seconds after the flow begins to drip. Repeat this procedure two more times. **Pressure rinse** as follows: Empty the remaining contents into application equipment or a mix tank and continue to drain for 10 seconds after the flow begins to drip. Hold container upside down over application equipment or mix tank or collect rinsate for later use or disposal. Insert pressure rinsing nozzle in the side of the container, and rinse at about 40 psi for at least 30 seconds. Drain for 10 seconds after the flow begins to drip.

Refillable containers 5 gallons or larger:

Container Handling: Refillable container. Refill this container with pesticide only. Do not reuse this container for any other purpose. Cleaning the container before final disposal is the responsibility of the person disposing of the container. Cleaning before refilling is the responsibility of the refiller. To clean the container before final disposal, empty the remaining contents from this container into application equipment or a mix tank. Fill the container about 10% full with water. Agitate vigorously or recirculate water with the pump for two minutes. Pour or pump rinsate into application equipment or rinsate collection system. Repeat this rinsing procedure two more times.

Nonrefillable containers 5 gallons or larger:

Container Handling: Nonrefillable container. Do not reuse or refill this container. Offer for recycling if available or puncture and dispose of in a sanitary landfill, or by incineration, or by other procedures allowed by state and local authorities.

Triple rinse or pressure rinse container (or equivalent) promptly after emptying. **Triple rinse** as follows: Empty the remaining contents into application equipment or a mix tank. Fill the container 1/4 full with water. Replace and tighten closures. Tip container on its side and roll it back and forth, ensuring at least one complete revolution, for 30 seconds. Stand the container on its end and tip it back and forth several times. Turn the container over onto its other end and tip it back and forth several times. Empty the rinsate into application equipment or a mix tank or store rinsate for later use or disposal. Repeat this procedure two more times. **Pressure rinse** as follows: Empty the remaining contents into application equipment or a mix tank and continue to drain for 10 seconds after the flow begins to drip. Hold container upside down over application equipment or mix tank or collect rinsate for later use or disposal. Insert pressure rinsing nozzle in the side of the container, and rinse at about 40 psi for at least 30 seconds. Drain for 10 seconds after the flow begins to drip.

General Information

Use Turflon® Ester Ultra specialty herbicide for the control of actively growing annual and perennial broadleaf weeds and kikuyugrass in perennial bluegrass, perennial ryegrass, or tall fescue ornamental turf including these turfgrasses in sod farms and golf courses.

General Use Precautions and Restrictions

In Arizona: The state of Arizona has not approved Turflon Ester Ultra for use on sod farms.

Chemigation: Do not apply this product through any type of irrigation system.

Do not apply Turflon Ester Ultra directly to, or otherwise permit it to come into direct contact with, cotton, grapes, tobacco, vegetable crops, flowers, fruit or orchard trees, shrubs, or other desirable broadleaf plants. Do not permit spray mists containing Turflon Ester Ultra to drift onto such plants.

To minimize turf injury, do not treat if turf is under heat or drought stress. Reapply Turflon Ester Ultra at 4-week intervals.

Mow newly seeded turf 2 or 3 times before treating. Do not water for 24 hours after application. Do not reseed for 3 weeks after application. (This precaution does not apply when Bermudagrass turf is overseeded with perennial ryegrass at a minimum reseeding rate of 400 lb per acre.)

Local conditions may affect the use of herbicides. Consult your local specialist for advice in selecting treatments from this label to best fit local conditions.

- Do not apply to ditches currently being used to transport irrigation water.
- Do not apply where runoff or irrigation water may flow onto agricultural land as injury to crops may result.
- Do not use on other turfgrass species, such as bahiagrass, bentgrass, Bermudagrass, centipedegrass, St. Augustinegrass, or zoysiagrass unless injury can be tolerated.
- Do not allow grazing to any area treated with Turflon Ester Ultra.
- Do not apply Turflon Ester Ultra to exposed roots of shallow rooted trees and shrubs.
- Do not apply to golf course greens.
- For spot treatments, do not apply more than 2 quarts of Turflon Ester Ultra per acre or 1.5 fl oz per 1000 sq ft in a single application.
- Use of this product in certain portions of California, Oregon, and Washington is subject to the January 22, 2004 Order of Injunctive Relief in *Washington Toxics Coalition et al vs EPA C01-132C (W.D. WA)*. For information, please refer to <http://www.epa.gov/espp/litstatus/wtc/qs-as.htm>.

Turflon Ester Ultra is formulated as a low volatile ester. However, the combination of spray contact with impervious surfaces, such as roads and rocks, and increasing ambient air temperatures, may result in an increase in the volatility potential for this herbicide, increasing a risk for off-target injury to sensitive crops such as grapes and tomatoes.

Avoiding Injurious Spray Drift

Make applications only when there is little or no hazard from spray drift. Very small quantities of spray, which may not be visible, may seriously injure susceptible plants. Do not spray when wind is blowing toward susceptible crops or ornamental plants that are near enough to be injured. Spray drift can be reduced by keeping the spray boom as low as possible; by using higher volume sprays and lower pressures; using nozzles that deliver larger spray droplets; and by spraying when wind velocity is low.

Broadleaf Weeds Controlled by Turflon Ester Ultra

black medic	curly dock	lespedeza	sweet clover
bull thistle	dandelion	matchweed	vetch
burdock	field bindweed	mustard	wild carrot
Canada thistle	goldenrod	oxalis	(Queen Anne's lace)
chicory	ground ivy	plantain	wild lettuce
clover	kikuyugrass ¹	ragweed	wild violet
creeping beggarweed	lambsquarters	smartweed	yarrow

¹See control of kikuyugrass under Application Instructions.

Mixing Instructions

Add about one-half of the required amount of clean water to the spray tank. Add Turflon Ester Ultra and complete addition of water with agitation running. Mix thoroughly and continue moderate agitation while spraying. When Turflon Ester Ultra is mixed with water, it forms an emulsion, not a solution; separation may occur unless the spray mixture is agitated continuously.

Tank Mixing: To improve the spectrum of activity, Turflon Ester Ultra may be tank mixed at a rate of 1/2 to 1 pint per acre with recommended rates of low volatile amine or ester formulations of 2,4-D, MCPP, or other labeled postemergence broadleaf herbicides provided the tank mix product is registered for use on ornamental turf (perennial bluegrass, perennial ryegrass, or tall fescue ornamental turf including these turfgrasses in sod farms and golf courses). Refer to the product labels of tank mix products and follow all appropriate use directions, precautions, and limitations.

Application Instructions

Broadcast Treatment of Ornamental Turf

Apply foliage sprays during warm weather, early spring through fall, when weeds are actively growing. Apply 1/2 to 1 quart of Turflon Ester Ultra per acre in enough water to control broadleaf weeds actively growing in perennial bluegrass, perennial ryegrass, or tall fescue. Only emerged weeds present at the time of application will be controlled. Apply using equipment that assures uniform coverage of the target area. When treating mature plants or hard to control species, and for applications made during drought conditions, use the higher rates of Turflon Ester Ultra. Applications made under drought conditions may provide less than desirable results.

Spot Treatment of Ornamental Turf

Mix 3/8 to 3/4 fl oz of Turflon Ester Ultra per 1000 sq ft in enough water to provide uniform coverage of the target area. Apply at any time broadleaf weeds are susceptible.

Control of Kikuyugrass

Apply Turflon Ester Ultra at a rate of 1/2 to 1 quart per acre. To improve activity, MSMA herbicide may be tank mixed with the 1/2 quart per acre rate of Turflon Ester Ultra. Three to 4 additional applications at 4- to 6-week intervals may be required to achieve control of kikuyugrass.

Control of Bermudagrass

Apply Turflon Ester Ultra at the rate of 1 quart per acre. Three to 4 additional applications at 4-week intervals are required for adequate suppression of Bermudagrass and allow fescue or other desired turfgrass species to dominate. To improve suppression and control of Bermudagrass, tank mix 1 quart of Turflon Ester Ultra per acre with a postemergence grass herbicide registered for this use pattern. Three to 4 additional applications of this tank mix at 4-week intervals should be made to achieve control. Reseeding following application will accelerate the transition to cool season turf.

Suppression of Bermudagrass When Overseeding with Perennial Ryegrass in the States of Arizona, California, Nevada, New Mexico, and Utah

Regulation of Bermudagrass growth by applying Turflon Ester Ultra is characterized by slowing and/or stopping of growth. Some browning of the Bermudagrass may also occur. Hybrid varieties of Bermudagrass are more susceptible to growth regulation than common Bermudagrass and the effects may be more pronounced. The degree of growth regulation and browning is rate-related. Test the growth regulation effect of Turflon Ester Ultra on small areas until the user is comfortable with the results in his particular turf management system. A rate can then be chosen that will provide the desired level of response. The length of the growth regulation effect is also rate-related with the higher rates providing a longer period of suppression. The overseeded ryegrass will not be affected by this treatment. Do not apply to golf course putting greens.

Apply 4 to 8 fl oz of Turflon Ester Ultra per acre to hybrid Bermudagrass and 6 to 10 fl oz of Turflon Ester Ultra per acre to common Bermudagrass.

Prior to overseeding: Apply to fairways from 2 weeks period to overseeding to just before overseeding. For best results, apply Turflon Ester Ultra prior to any aggressive verticutting, scalping, or other seedbed preparation practices to ensure that adequate leaf surface of Bermudagrass is available for update of Turflon Ester Ultra. A single application of Turflon Ester Ultra prior to overseeding usually provides about 30 days of Bermudagrass growth suppression.

After overseeding: If temperatures are sufficient to support active growth of Bermudagrass, additional applications of Turflon Ester Ultra can be made to extend the plant growth regulation effect. If additional applications are required, make them after the overseeded ryegrass is established, approximately 3 weeks after seeding. Allow a minimum of 4 weeks between applications.

Terms and Conditions of Use

If terms of the following Warranty Disclaimer, Inherent Risks of Use, and Limitation of Remedies are not acceptable, return unopened package at once to the seller for a full refund of purchase price paid. Otherwise, use by the buyer or any other user constitutes acceptance of the terms under Warranty Disclaimer, Inherent Risks of Use and Limitation of Remedies.

Warranty Disclaimer

Dow AgroSciences warrants that this product conforms to the chemical description on the label and is reasonably fit for the purposes stated on the label when used in strict accordance with the directions, subject to the inherent risks set forth below. Dow AgroSciences MAKES NO OTHER EXPRESS OR IMPLIED WARRANTY OF MERCHANTABILITY OR FITNESS FOR A PARTICULAR PURPOSE OR ANY OTHER EXPRESS OR IMPLIED WARRANTY. To the extent permitted by law, all such risks shall be assumed by the buyer.

Inherent Risks of Use

It is impossible to eliminate all risks associated with use of this product. Plant injury, lack of performance, or other unintended consequences may result because of such factors as use of the product contrary to label instructions (including conditions noted on the label, such as unfavorable temperature, soil conditions, etc.), abnormal conditions (such as excessive rainfall, drought, tornadoes, hurricanes), presence of other materials, the manner of application, or other factors, all of which are beyond the control of Dow AgroSciences or the seller. All such risks shall be assumed by buyer.

Limitation of Remedies

To the extent permitted by law, the exclusive remedy for losses or damages resulting from this product (including claims based on contract, negligence, strict liability, or other legal theories), shall be limited to, at Dow AgroSciences' election, one of the following:

1. Refund of purchase price paid by buyer or user for product bought, or
2. Replacement of amount of product used.

Dow AgroSciences shall not be liable for losses or damages resulting from handling or use of this product unless Dow AgroSciences is promptly notified of such loss or damage in writing. In no case shall Dow AgroSciences be liable for consequential or incidental damages or losses.

The terms of the Warranty Disclaimer, Inherent Risks of Use and this Limitation of Remedies cannot be varied by any written or verbal statements or agreements. No employee or sales agent of Dow AgroSciences or the seller is authorized to vary or exceed the terms of the Warranty Disclaimer or this Limitation of Remedies in any manner.

®Trademark of Dow AgroSciences LLC

Produced for
Dow AgroSciences LLC
9330 Zionville Road
Indianapolis, IN 46268

Label Code: D02-385-002
Replaces Label: D02-385-001
LOES Number: 010-02232

EPA accepted 10/03/06

Revisions:

1. Update Storage and Disposal.