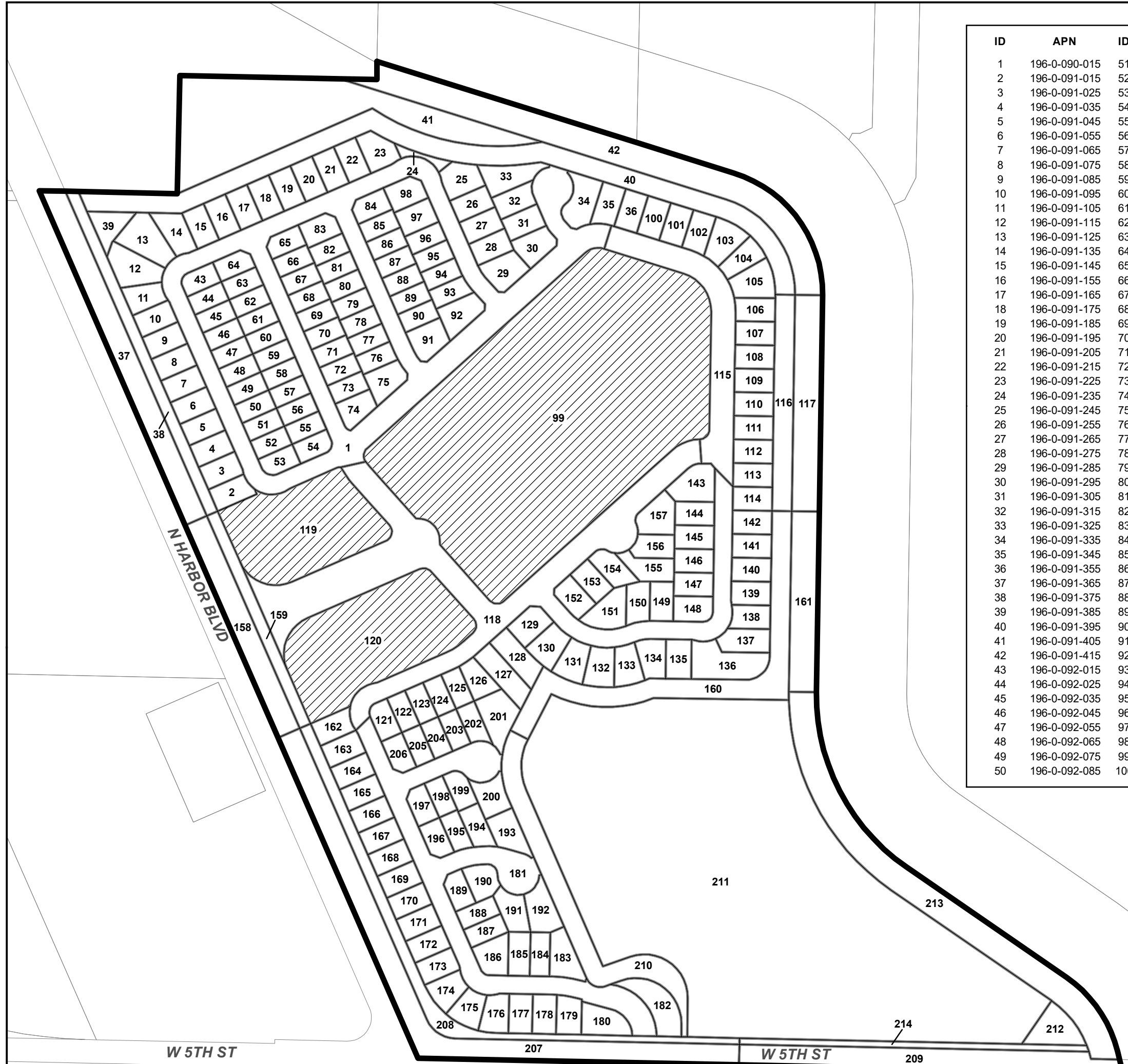


MAP OF PROPOSED BOUNDARIES OF CITY OF OXNARD COMMUNITY FACILITIES DISTRICT NO. 9 (NORTHSHORE AT MANDALAY BAY)

CITY OF OXNARD
COUNTY OF VENTURA
STATE OF CALIFORNIA

ID	APN	ID	APN	ID	APN	ID	APN	ID	APN
1	196-0-090-015	51	196-0-092-095	101	196-0-100-035	151	196-0-110-345	201	196-0-120-405
2	196-0-091-015	52	196-0-092-105	102	196-0-100-045	152	196-0-110-355	202	196-0-120-415
3	196-0-091-025	53	196-0-092-115	103	196-0-100-055	153	196-0-110-365	203	196-0-120-425
4	196-0-091-035	54	196-0-092-125	104	196-0-100-065	154	196-0-110-375	204	196-0-120-435
5	196-0-091-045	55	196-0-092-135	105	196-0-100-075	155	196-0-110-385	205	196-0-120-445
6	196-0-091-055	56	196-0-092-145	106	196-0-100-085	156	196-0-110-395	206	196-0-120-455
7	196-0-091-065	57	196-0-092-155	107	196-0-100-095	157	196-0-110-405	207	196-0-120-465
8	196-0-091-075	58	196-0-092-165	108	196-0-100-105	158	196-0-110-415	208	196-0-120-475
9	196-0-091-085	59	196-0-092-175	109	196-0-100-115	159	196-0-110-425	209	196-0-120-485
10	196-0-091-095	60	196-0-092-185	110	196-0-100-125	160	196-0-110-435	210	196-0-120-495
11	196-0-091-105	61	196-0-092-195	111	196-0-100-135	161	196-0-110-445	211	196-0-120-505
12	196-0-091-115	62	196-0-092-205	112	196-0-100-145	162	196-0-110-455	212	196-0-120-515
13	196-0-091-125	63	196-0-092-215	113	196-0-100-155	163	196-0-110-465	213	196-0-120-525
14	196-0-091-135	64	196-0-092-225	114	196-0-100-165	164	196-0-110-475	214	196-0-120-535
15	196-0-091-145	65	196-0-093-015	115	196-0-100-175	165	196-0-110-485		
16	196-0-091-155	66	196-0-093-025	116	196-0-100-185	166	196-0-110-495		
17	196-0-091-165	67	196-0-093-035	117	196-0-100-195	167	196-0-110-505		
18	196-0-091-175	68	196-0-093-045	118	196-0-100-205	168	196-0-110-515		
19	196-0-091-185	69	196-0-093-055	119	196-0-100-215	169	196-0-110-525		
20	196-0-091-195	70	196-0-093-065	120	196-0-100-225	170	196-0-110-535		
21	196-0-091-205	71	196-0-093-075	121	196-0-100-235	171	196-0-110-545		
22	196-0-091-215	72	196-0-093-085	122	196-0-100-245	172	196-0-110-555		
23	196-0-091-225	73	196-0-093-095	123	196-0-100-255	173	196-0-110-565		
24	196-0-091-235	74	196-0-093-105	124	196-0-100-265	174	196-0-110-575		
25	196-0-091-245	75	196-0-093-115	125	196-0-100-275	175	196-0-110-585		
26	196-0-091-255	76	196-0-093-125	126	196-0-100-285	176	196-0-110-595		
27	196-0-091-265	77	196-0-093-135	127	196-0-100-295	177	196-0-110-605		
28	196-0-091-275	78	196-0-093-145	128	196-0-100-305	178	196-0-110-615		
29	196-0-091-285	79	196-0-093-155	129	196-0-100-315	179	196-0-110-625		
30	196-0-091-295	80	196-0-093-165	130	196-0-100-325	180	196-0-110-635		
31	196-0-091-305	81	196-0-093-175	131	196-0-100-335	181	196-0-110-645		
32	196-0-091-315	82	196-0-093-185	132	196-0-100-345	182	196-0-110-655		
33	196-0-091-325	83	196-0-093-195	133	196-0-100-355	183	196-0-110-665		
34	196-0-091-335	84	196-0-094-015	134	196-0-100-365	184	196-0-110-675		
35	196-0-091-345	85	196-0-094-025	135	196-0-100-375	185	196-0-110-685		
36	196-0-091-355	86	196-0-094-035	136	196-0-100-385	186	196-0-110-695		
37	196-0-091-365	87	196-0-094-045	137	196-0-100-395	187	196-0-110-705		
38	196-0-091-375	88	196-0-094-055	138	196-0-100-405	188	196-0-110-715		
39	196-0-091-385	89	196-0-094-065	139	196-0-100-415	189	196-0-110-725		
40	196-0-091-395	90	196-0-094-075	140	196-0-100-425	190	196-0-110-735		
41	196-0-091-405	91	196-0-094-085	141	196-0-100-435	191	196-0-110-745		
42	196-0-091-415	92	196-0-094-095	142	196-0-100-445	192	196-0-110-755		
43	196-0-092-015	93	196-0-094-105	143	196-0-100-455	193	196-0-110-765		
44	196-0-092-025	94	196-0-094-115	144	196-0-100-465	194	196-0-110-775		
45	196-0-092-035	95	196-0-094-125	145	196-0-100-475	195	196-0-110-785		
46	196-0-092-045	96	196-0-094-135	146	196-0-100-485	196	196-0-110-795		
47	196-0-092-055	97	196-0-094-145	147	196-0-100-495	197	196-0-110-805		
48	196-0-092-065	98	196-0-094-155	148	196-0-100-505	198	196-0-110-815		
49	196-0-092-075	99	196-0-100-015	149	196-0-100-515	199	196-0-110-825		
50	196-0-092-085	100	196-0-100-025	150	196-0-100-525	200	196-0-110-835		



- CFD Boundary
- Zone A Parcels
- Zone B Parcels
- Parcels

0 75 150 300 Feet

FILED IN THE OFFICE OF THE CITY CLERK OF THE CITY OF OXNARD THIS _____ DAY OF _____, 20__.

CITY CLERK _____

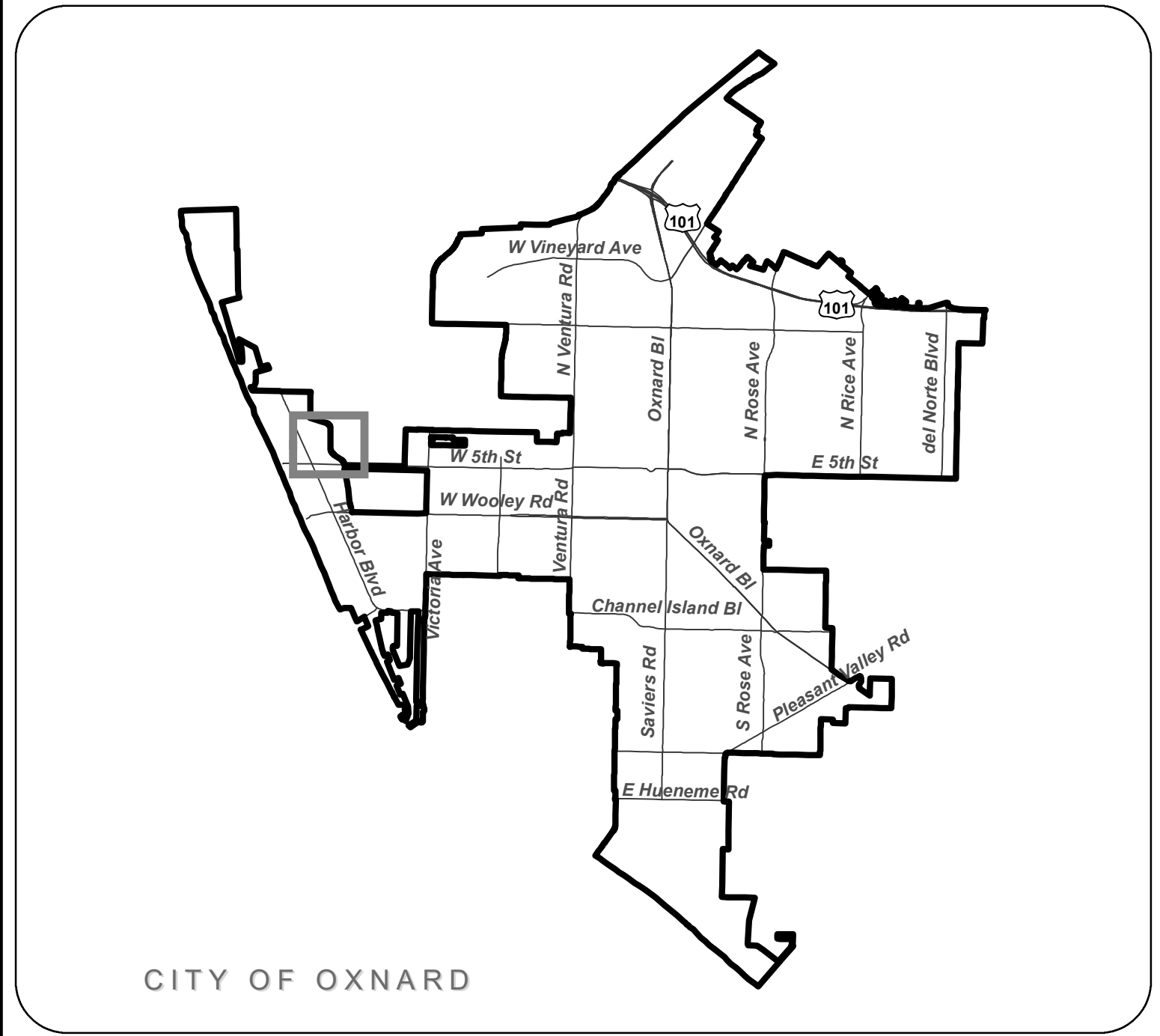
I HEREBY CERTIFY THAT THE WITHIN MAP SHOWING PROPOSED BOUNDARIES OF THE CITY OF OXNARD COMMUNITY FACILITIES DISTRICT NO. 9 (NORTHSHORE AT MANDALAY BAY), COUNTY OF VENTURA, STATE OF CALIFORNIA, WAS APPROVED BY THE CITY COUNCIL OF THE CITY OF OXNARD, AT A MEETING THEREOF, HELD ON THE _____ DAY OF _____, 20__, BY ITS RESOLUTION NO. _____.

CITY CLERK _____

FILED THIS _____ DAY OF _____, 20__, AT THE HOUR OF _____ O'CLOCK __ M, IN BOOK _____ OF MAPS OF ASSESSMENT AND COMMUNITY FACILITIES DISTRICTS AT PAGE _____ IN THE OFFICE OF THE COUNTY RECORDER OF THE COUNTY OF VENTURA, STATE OF CALIFORNIA.

COUNTY RECORDER
COUNTY OF VENTURA, CALIFORNIA

FOR PARTICULARS OF THE LINES AND DIMENSIONS OF ASSESSOR PARCELS, REFERENCE IS MADE TO THE MAPS OF THE ASSESSOR, COUNTY OF VENTURA, STATE OF CALIFORNIA.



Source: Ventura County GIS
Geographic Coordinate Reference: GCS North American 1983
Projection: NAD 1983 StatePlane California V FIPS 0405 Feet

