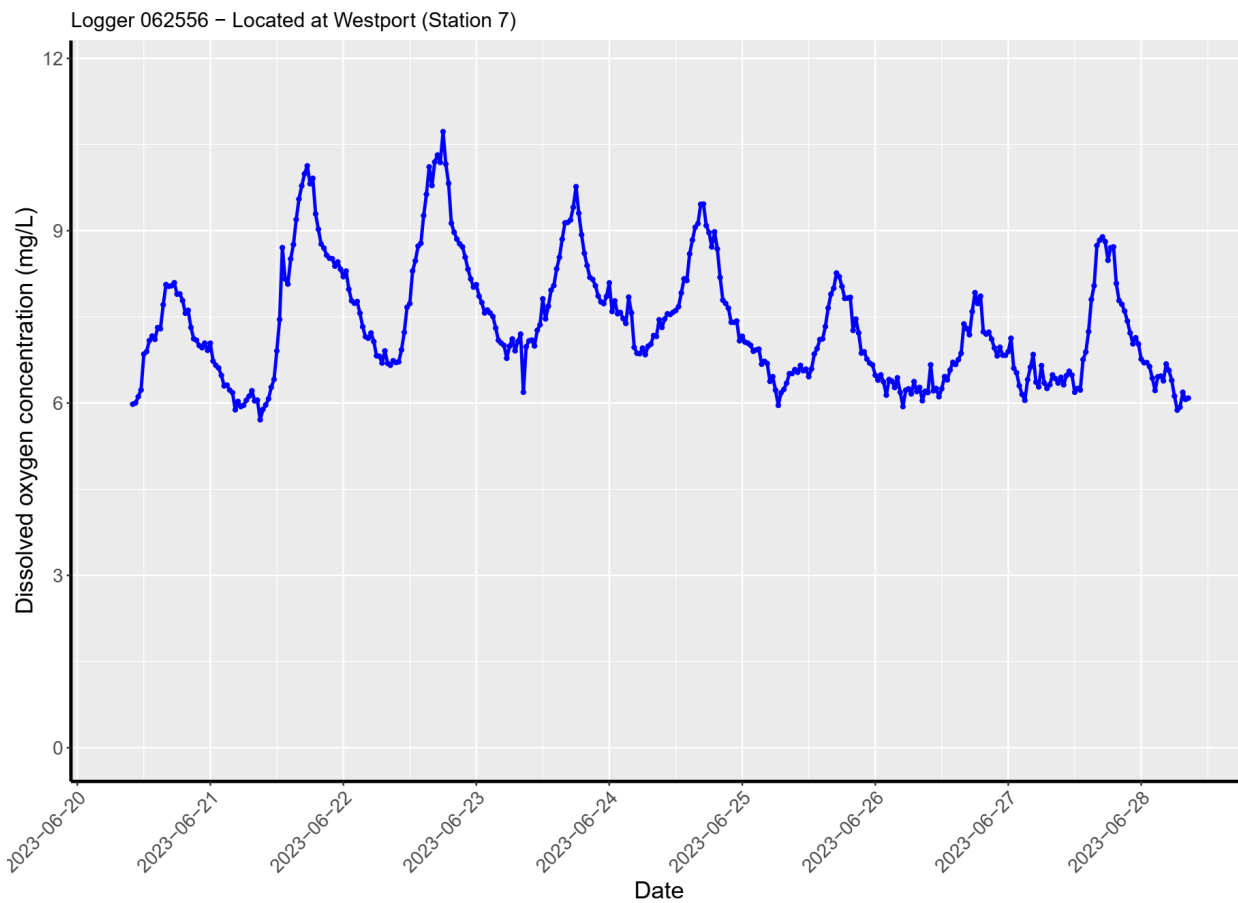
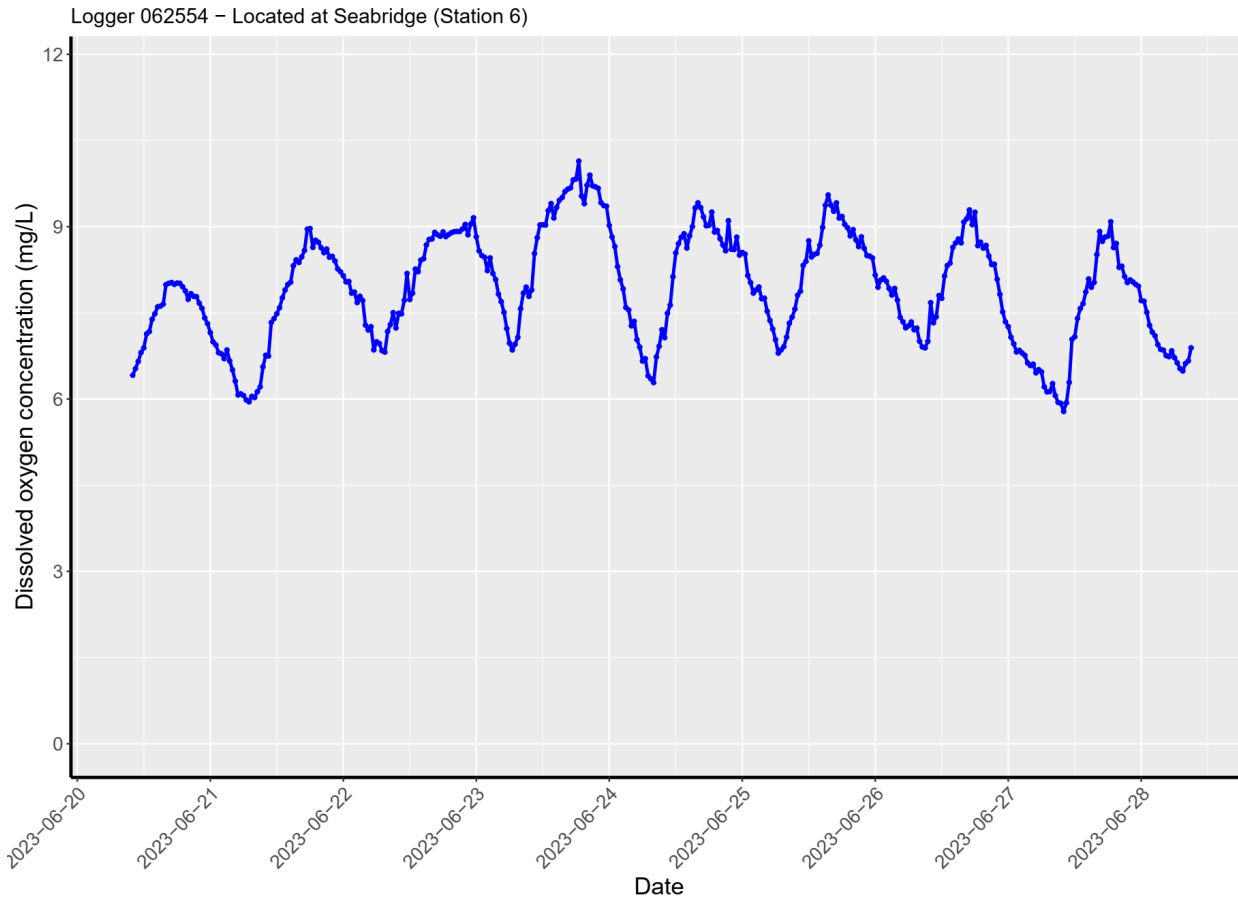
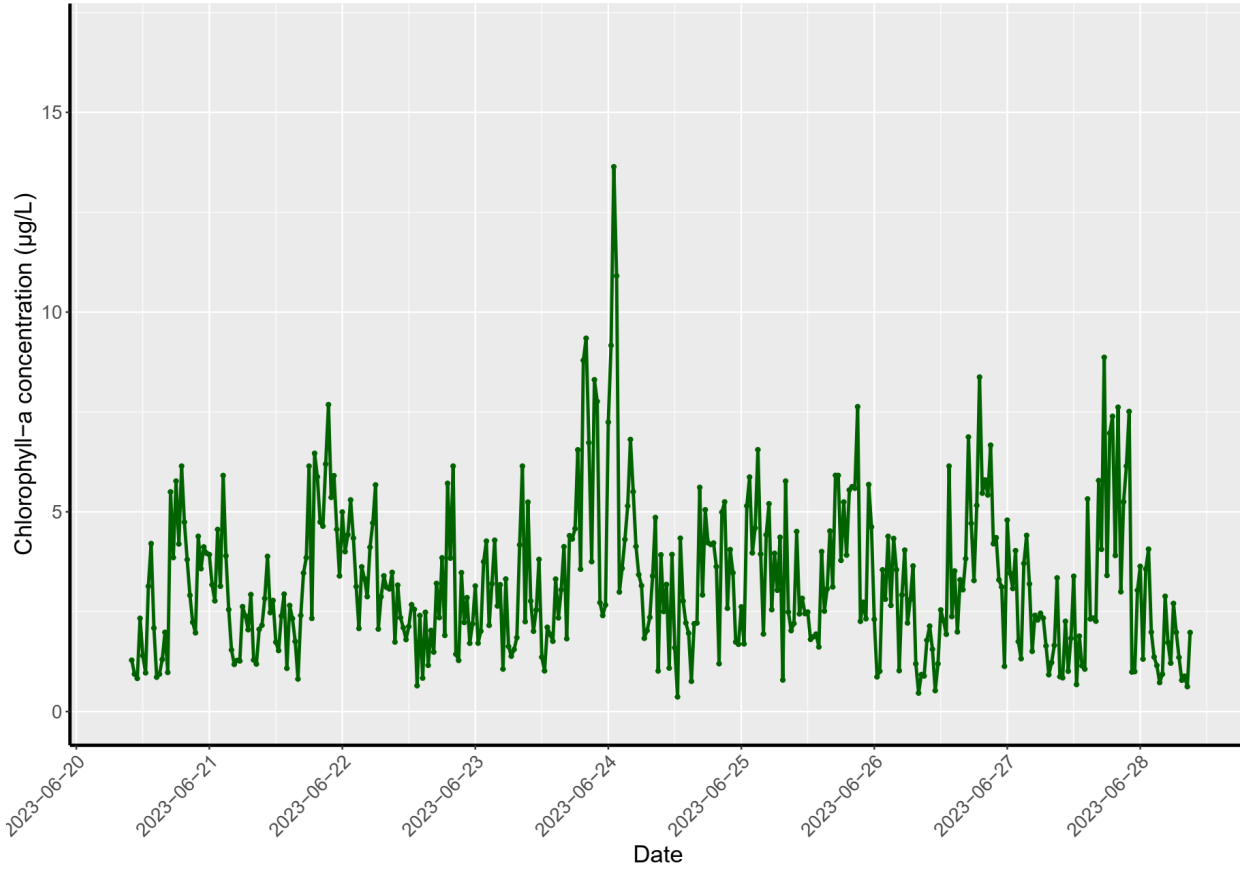


Below is the weekly remote sensor data from 6/20/23 to 6/28/23. Dissolved oxygen (DO; in blue) and chlorophyll concentrations (a proxy for microscopic algal biomass, in green) were acceptable at both stations with normal daily oscillations observed.

The City of Oxnard and Aquatic Bioassay & Consulting will continue to monitor the sensors in the area.



Logger 062554 – Located at Seabridge (Station 6)



Logger 062556 – Located at Westport (Station 7)

